

DSI BOARD LED's

| LED STATE | COLOR | CODE | |
|-----------|------------|------|--|
| GREEN | STEADY ON | | NORMAL OPERATION NO CALL FOR HEAT |
| GREEN | FAST FLASH | | NORMAL OPERATION CALL FOR HEAT |
| GREEN | 1 FLASH | | IN LOCKOUT FROM FIELD IGNITIONS OR FLAME LOSSES |
| GREEN | 2 FLASHES | | PRESSURE SWITCH DOES NOT CLOSE WITHIN 30 SECONDS OF VENTER ENERGIZED |
| GREEN | 3 FLASHES | | LIMIT SWITCH OPEN |
| GREEN | 4 FLASHES | | PRESSURE SWITCH IS CLOSED BEFORE VENTER IS ENERGIZED |
| GREEN | STEADY OFF | | INTERNAL CONTROL FAULT OR NO POWER |
| YELLOW | STEADY ON | | FLAME SENSED |
| YELLOW | SLOW FLASH | | WEAK FLAME |
| YELLOW | FAST FLASH | | UNDESIRED FLAME (VALVE OPEN & NO CALL FOR HEAT) |

REFER TO DRAWING # 1011991 FOR STANDARD PLUG & ECONOMIZER PLUG CONNECTION

NOTES

1. DISCONNECT ALL POWER BEFORE SERVICING.
2. CAUTION: IF ANY OF THE ORIGINAL WIRE AS SUPPLIED WITH THE APPLIANCE MUST BE REPLACED, IT MUST BE REPLACED WITH WIRING MATERIAL HAVING A TEMPERATURE RATING OF AT LEAST 105 DEGREES C.
3. LINE AND BLOWER MOTOR BRANCH CIRCUIT WIRE SHOULD BE OF A SIZE TO PREVENT VOLTAGE DROP BEYOND FIVE PERCENT OF SUPPLY LINE VOLTAGE.
4. SEE RATING PLATE LABEL FOR MCA, TO DETERMINE LINE FEED COPPER WIRE SIZE. LINE FEEDS CONNECT TO THE LOCKABLE DISCONNECT OR DISTRIBUTION BLOCKS.
5. USE #18 GA. WIRE FOR 24 VOLT CONTROL WIRING ON UNIT.
6. WHEN PROVIDING OR REPLACING FUSES IN THE FUSIBLE DISCONNECT SWITCH USE DUAL ELEMENTS TIME DELAY FUSES AND SIZE ACCORDING TO 1.25 TIMES THE MAXIMUM TOTAL INPUT AMPS.
7. ALL MOTORS MARKED IOL HAVE INTERNAL LINE BREAK.
8. FUSIBLE DISCONNECT IS FIELD FURNISHED OR AVAILABLE FROM FACTORY AS AN OPTION.
9. THE LINE SIDE OF THE DISCONNECT SWITCH MUST BE CONNECTED TO THE INCOMING POWER SUPPLY SUCH THAT THE VOLTAGE BETWEEN L1 AND GROUND IS THE GREATER VALUE.
10. ALL 24 VAC LOW VOLTAGE CONNECTIONS TO UNIT MUST BE CLASS 2.

FIELD CONTROL WIRING

WIRING CODE

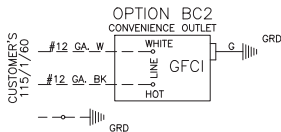
- BLACK - BK
- BROWN - BR
- RED - RD
- ORANGE - OR
- YELLOW - YE
- GREEN - GN
- BLUE - BL
- VIOLET - VI
- WHITE - WH
- GRAY - GY

| TOTAL WIRE LENGTH | MINIMUM RECOMMENDED WIRE SIZE |
|-------------------|-------------------------------|
| 150 FEET | #18 GA. |
| 250 FEET | #16 GA. |
| 350 FEET | #14 GA. |

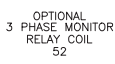
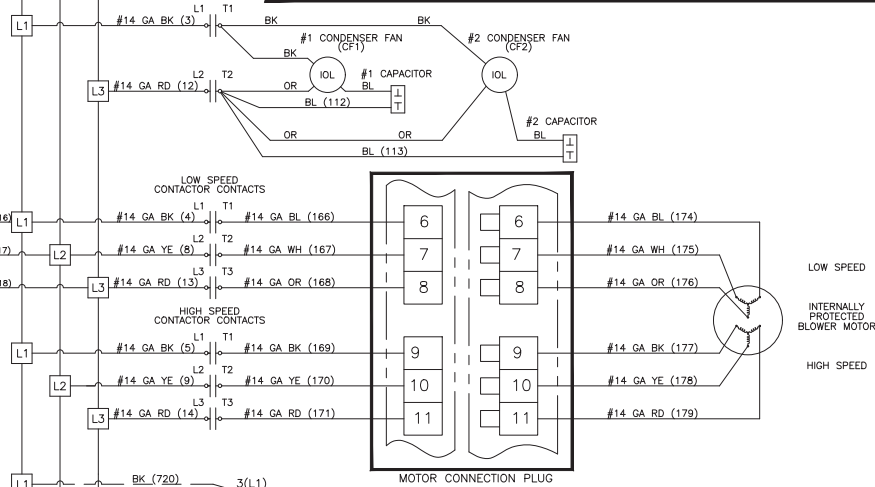
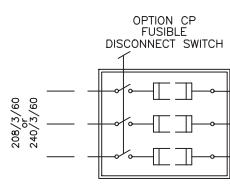
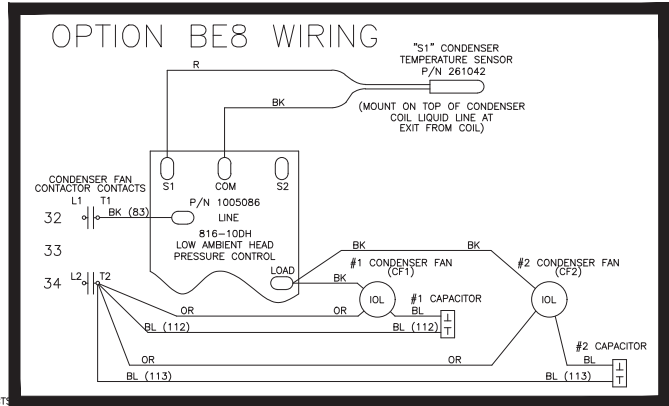
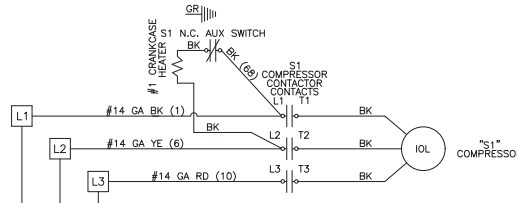
————— FACTORY WIRING
 - - - - - FIELD WIRING

- TERMINAL BLOCK – UNIT PANEL (HIGH VOLTAGE SECTION)
- ◇ TERMINAL BLOCK – UNIT PANEL (LOW VOLTAGE SECTION)

- L1
- L2
- L3
- ◇ L1
- ◇ L3
- ◇ 3
- ◇ 5
- ◇ 7
- ◇ 7
- ◇ 8
- ◇ 8
- ◇ 10
- ◇ 16
- ◇ 20
- ◇ 21
- ◇ 22
- ◇ 36
- ◇ 37
- ◇ 38
- ◇ 39
- ◇ 40
- ◇ 41
- ◇ 46
- ◇ 48
- ◇ 50
- ◇ 51
- ◇ 52
- ◇ 53
- ◇ 54
- ◇ 72



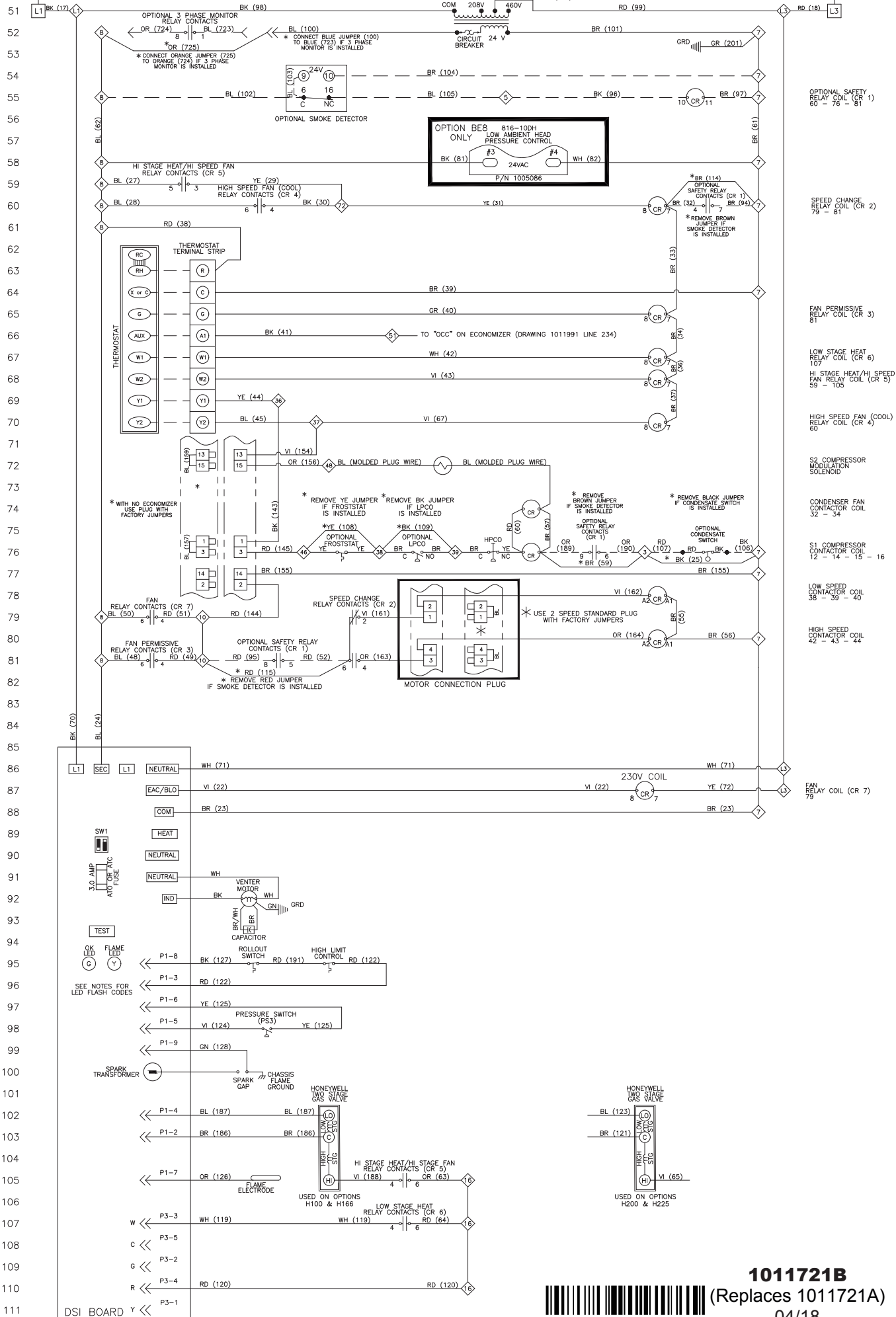
MUST BE INSTALLED ON GFCI BREAKER
 NOTE: CONVENIENCE OUTLET WILL NOT BE DE-ENERGIZED BY OPENING A LINE VOLTAGE DISCONNECT.



1011721B
 (Replaces 1011721A)
 04/18

TRANSFORMER NOTE:

FOR 208V OPERATION REMOVE WIRE FROM 230V TAP AND PLACE ON 208V TAP.



1011721B
 (Replaces 1011721A)
 04/18

