

# DSI BOARD LED'S

R7TQ-150: AK7

SHT. #1

REFER TO DRAWING # 1011991 FOR STANDARD PLUG & ECONOMIZER PLUG CONNECTION

LED STATE	COLOR	CODE	
GREEN	STEADY ON		NORMAL OPERATION NO CALL FOR HEAT
GREEN	FAST FLASH		NORMAL OPERATION CALL FOR HEAT
GREEN	1 FLASH		IN LOCKOUT FROM FIELD IGNITIONS OR FLAME LOSSES
GREEN	2 FLASHES		PRESSURE SWITCH DOES NOT CLOSE WITHIN 30 SECONDS OF VENTER ENERGIZED
GREEN	3 FLASHES		LIMIT SWITCH OPEN
GREEN	4 FLASHES		PRESSURE SWITCH IS CLOSED BEFORE VENTER IS ENERGIZED
GREEN	STEADY OFF		INTERNAL CONTROL FAULT OR NO POWER
YELLOW	STEADY ON		FLAME SENSED
YELLOW	SLOW FLASH		WEAK FLAME
YELLOW	FAST FLASH		UNDESIRED FLAME (VALVE OPEN & NO CALL FOR HEAT)

### NOTES

1. DISCONNECT ALL POWER BEFORE SERVICING.
2. CAUTION: IF ANY OF THE ORIGINAL WIRE AS SUPPLIED WITH THE APPLIANCE MUST BE REPLACED, IT MUST BE REPLACED WITH WIRING MATERIAL HAVING A TEMPERATURE RATING OF AT LEAST 105 DEGREES C.
3. LINE AND BLOWER MOTOR BRANCH CIRCUIT WIRE SHOULD BE OF A SIZE TO PREVENT VOLTAGE DROP BEYOND FIVE PERCENT OF SUPPLY LINE VOLTAGE.
4. SEE RATING PLATE LABEL FOR MCA, TO DETERMINE LINE FEED COPPER WIRE SIZE. LINE FEEDS CONNECT TO THE LOCKABLE DISCONNECT OR DISTRIBUTION BLOCKS.
5. USE #18 GA. WIRE FOR 24 VOLT CONTROL WIRING ON UNIT.
6. WHEN PROVIDING OR REPLACING FUSES IN THE FUSIBLE DISCONNECT SWITCH USE DUAL ELEMENTS TIME DELAY FUSES AND SIZE ACCORDING TO 1.25 TIMES THE MAXIMUM TOTAL INPUT AMPS.
7. ALL MOTORS MARKED IOL HAVE INTERNAL LINE BREAK.
8. FUSIBLE DISCONNECT IS FIELD FURNISHED OR AVAILABLE FROM FACTORY AS AN OPTION.
9. THE LINE SIDE OF THE DISCONNECT SWITCH MUST BE CONNECTED TO THE INCOMING POWER SUPPLY SUCH THAT THE VOLTAGE BETWEEN L1 AND GROUND IS THE GREATER VALUE.
10. ALL 24 VAC LOW VOLTAGE CONNECTIONS TO UNIT MUST BE CLASS 2.

### FIELD CONTROL WIRING

TOTAL WIRE LENGTH	MINIMUM RECOMMENDED WIRE SIZE
150 FEET	#18 GA.
250 FEET	#16 GA.
350 FEET	#14 GA.

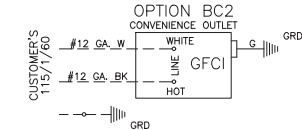
### WIRING CODE

- BLACK - BK
- BROWN - BR
- RED - RD
- ORANGE - OR
- YELLOW - YE
- GREEN - GN
- BLUE - BL
- VIOLET - VI
- WHITE - WH
- GRAY - GY

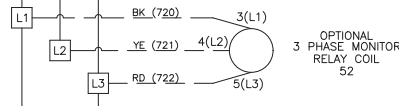
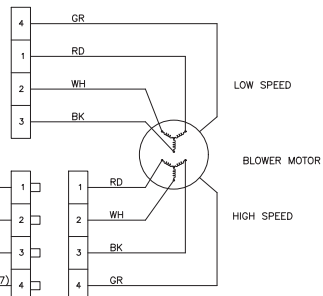
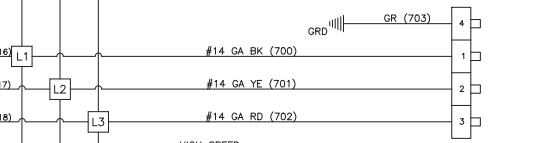
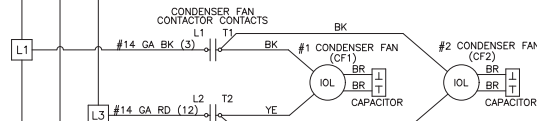
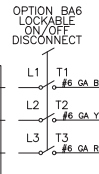
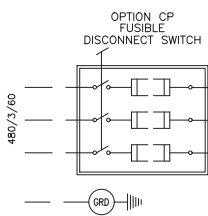
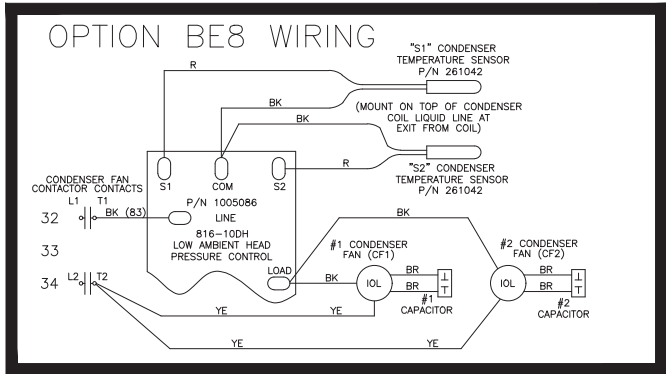
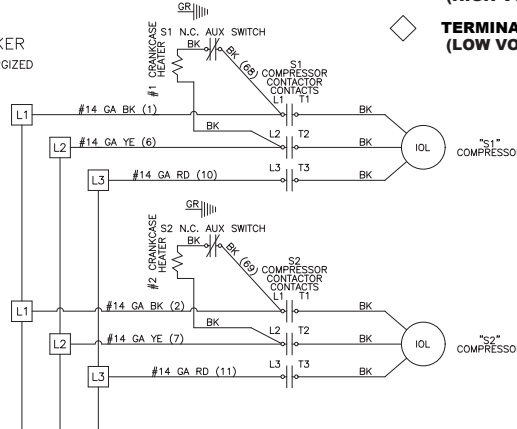
————— FACTORY WIRING  
 - - - - - FIELD WIRING

□ TERMINAL BLOCK -- UNIT PANEL (HIGH VOLTAGE SECTION)  
 ◇ TERMINAL BLOCK -- UNIT PANEL (LOW VOLTAGE SECTION)

- L1
- L2
- L3
- 3
- 5
- 7
- 7
- 8
- 8
- 10
- 16
- 20
- 21
- 22
- 36
- 37
- 38
- 39
- 40
- 41
- 46
- 48
- 50
- 51
- 52
- 53
- 54
- 72



MUST BE INSTALLED ON GFCI BREAKER  
 NOTE: CONVENIENCE OUTLET WILL NOT BE DE-ENERGIZED BY OPENING A LINE VOLTAGE DISCONNECT.

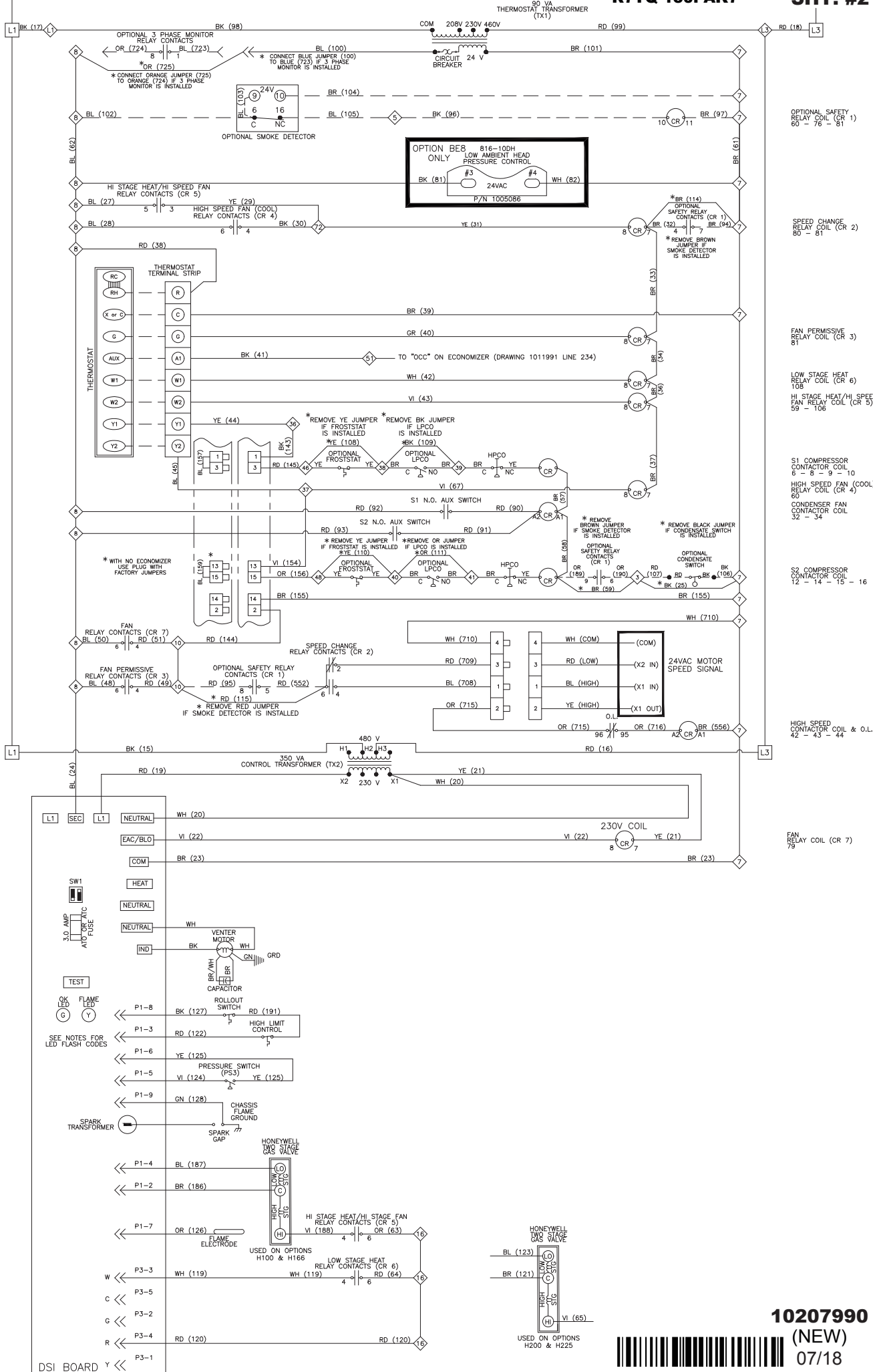


10207990

(NEW)  
07/18



50  
51  
52  
53  
54  
55  
56  
57  
58  
59  
60  
61  
62  
63  
64  
65  
66  
67  
68  
69  
70  
71  
72  
73  
74  
75  
76  
77  
78  
79  
80  
81  
82  
83  
84  
85  
86  
87  
88  
89  
90  
91  
92  
93  
94  
95  
96  
97  
98  
99  
100  
101  
102  
103  
104  
105  
106  
107  
108  
109  
110  
111  
112



10207990  
(NEW)  
07/18

