

REPLACEMENT PARTS LIST

SINGLE PACKAGE, MULTI-STAGE, VARIABLE SPEED, INVERTER DRIVEN

SYSTEM WITH GAS HEATING / ELECTRIC COOLING

R6GI SERIES - 20 SEER / 81% AFUE MODELS



IMPORTANT

- This document is primarily intended to assist qualified individuals experienced in the proper repair or servicing of this appliance. Only factory authorized parts or accessory kits may be used with this product. Improper installation, service, adjustment, or maintenance may cause explosion, fire, electrical shock or other hazardous conditions which may result in personal injury or property damage.
- Some local codes require licensed installation / service personnel to service this type of equipment. Under no circumstances should the equipment owner attempt to install parts or service this equipment. Failure to comply with this warning could result in property damage, personal injury, or death.

**R6GI SERIES SINGLE PACKAGE , MULTI-STAGE, VARIABLE SPEED INVERTER
DRIVEN SYSTEM WITH GAS HEATING / ELECTRIC COOLING**

ITEM	DESCRIPTION	R6GI- E24K080X	R6GI- E36K100X	R6GI- E48K120X	R6GI- E60K120X
		921275	921276	921277	921278
1	ASSY, CAP, DUCT, HORIZONTAL	283101R	283101R	283101R	283101R
2	TOP PAN , INSULATED	M0034707R	M0034707R	M0034707R	M007286R
3	FITTING, PANEL 3/8"	664696	664696	664696	664696
4	CORE, CHARGING PORT (NOT SHOWN)	662103	662103	662103	662103
5	PANEL, HEAT EX. DIVIDER	D05072R	D05072R	D05074R	D05074R
6	BOTTOM PAN ASSY	D05484R	D05482R	D05482R	D05483R
7	RAIL, BASE, 47.23" LG	277551	277551	277551	277551
8	RAIL, BASE, 55.63" LG	277552	277552	277552	277552
9	HARNESS, DM2F, GROUND W/ FERRITE (NOT SHOWN)	634825	634825	634825	634825
10	DIVIDER PANEL ASSY, 34"	M0070201R	M0070201R	-	-
	DIVIDER PANEL ASSY, 42"	-	-	M0070203R	M0070203R
11	DUCT CAP ASSY.	D05530R	D05530R	D05530R	D05530R
12	BLOWER SERVICE PANEL ASSY, 34"	D05542R	D05542R	-	-
	BLOWER SERVICE PANEL ASSY, 42"	-	-	M0060705R	M0060705R
13	FRONT ACCESS, DOOR ASSY, LOUV,34"	M0068501R	M0068501R	-	-
	FRONT ACCESS, DOOR ASSY, LOUV,42"	-	-	M0068503R	M0068503R
14	SUPPLY PANEL ASSY, 34"	D05552R	D05552R	-	-
	SUPPLY PANEL ASSY, 42"	-	-	M0060706R	M0060706R
15	RETURN PANEL ASSY,34"	M0068601R	M0068601R	-	-
	RETURN PANEL ASSY,42"	-	-	M0068603R	M0068603R
16	CORNER PANEL ASSY, 34"	D05628R	D05628R	-	-
	CORNER PANEL ASSY, 42"	-	-	M0060708R	M0060708R
17	ASSY, CLOSE-OFF PANEL, 34"	M0068701R	M0068701R	-	-
	ASSY, CLOSE-OFF PANEL, 42"	-	-	M0068703R	M0068703R
18	PAN, DRAIN	669190	669190	669190	669190
19	TUBE, DRAIN	656369	656369	656369	656369
20	POST, CORNER, 34"	D09996R	D09996R	-	-
	POST, CORNER, 42"	-	-	2B1941R	2B1941R
21	PANEL, CONTROL BOX, 34"	2B5861R	2B5861R	-	-
	PANEL, CONTROL BOX, 42"	-	-	2B5863R	2B5863R
22	HINGE, LEFT, LONG PIN	669900	669900	669900	669900
23	HINGE, LEFT, SHORT PIN	669901	669901	669901	669901
24	HINGE, RIGHT, NO PIN	669902	669902	669902	669902
25	ACCESS DOOR, INVERTER, 34"	2B8861R	2B8861R	-	-
	ACCESS DOOR, INVERTER, 42"	-	-	2B8863R	2B8863R
26	ACCESS PANEL, 34"	2B5831R	2B5831R	-	-
	ACCESS PANEL, 42"	-	-	2B5833R	2B5833R
27	PANEL, HI FLOW	2B5841R	2B5841R	2B5841R	2B5841R
28	CLOSE-OFF, TOP	2B5811	2B5811	2B5811	2B5811
29	CLOSE-OFF, BOTTOM	2B5821	2B5821	2B5821	2B5821
30	BRACKET, LIFT OFF, TOP	2B8881	2B8881	2B8881	2B8881
31	BRACKET, LIFT OFF, BOTTOM	2B8871	2B8871	2B8871	2B8871
32	BLOWER HSG ASSY, 11X8	297217R	297217R	-	-
	BLOWER HSG ASSY, 11X10	-	-	297219R	297219R
33	WHEEL, BLOWER 11 X 8	667258	667258	-	-
	WHEEL, BLOWER 11 X 10	-	-	667260	667260
34	INDOOR MOTOR, R6GI, 1/2HP	M0071804R	M0071804R	-	-
	INDOOR MOTOR, R6GI, 1HP	-	-	M0071805R	M0071805R
35	HARNESS, INDOOR MOTOR (NOT SHOWN)	634801	634801	634801	634801
36	HARNESS, DM2F, POWER WIRING W/ FERRITE (NOT SHOWN)	634813	634813	634813	634813
37	HARNESS, DM2F, CONTROL WIRING W/ FERRITE (NOT SHOWN)	634814	634814	634814	634814
38	CONTACTOR, 1P, 30FLA	624713	624713	624713	-
	CONTACTOR, 1P, 40FLA	-	-	-	624714
39	TRNSFRM, 208/240/24V, 40VA, 60HZ	622336	622336	-	-
	TRNSFRM, 208/240/24V, 60VA, 60HZ	-	-	622335	622335

Please specify the correct Model No., Serial No, and part number(s) when ordering parts from the nearest authorized dealer or service center.

**R6GI SERIES SINGLE PACKAGE , MULTI-STAGE, VARIABLE SPEED INVERTER
DRIVEN SYSTEM WITH GAS HEATING / ELECTRIC COOLING**

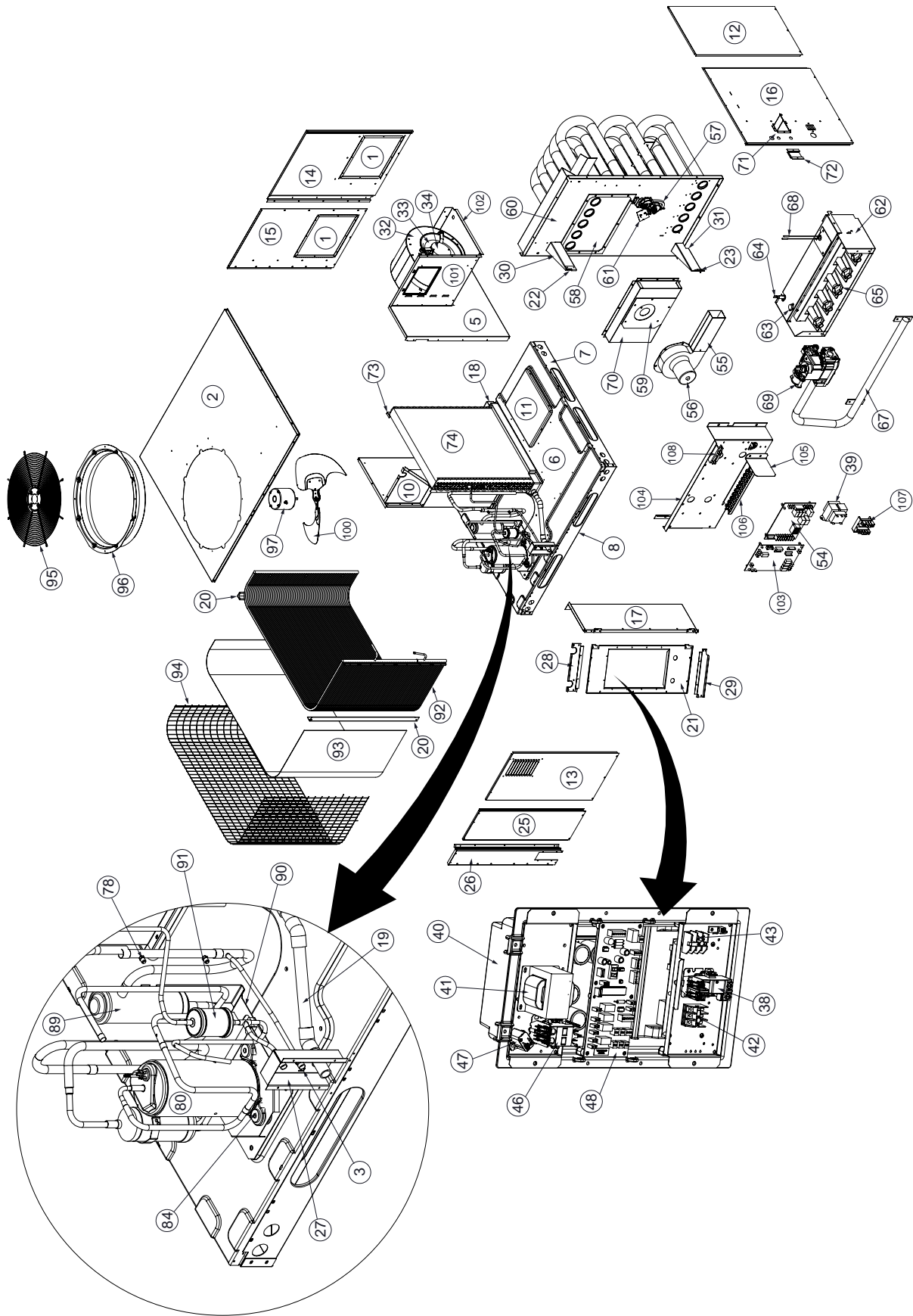
ITEM	DESCRIPTION	R6GI- E24K080X	R6GI- E36K100X	R6GI- E48K120X	R6GI- E60K120X
		921275	921276	921277	921278
40	INVERTER DRIVER ASSEMBLY, 2 TON	624762R	-	-	-
	INVERTER DRIVER ASSEMBLY, 3 TON	-	624763R	-	-
	INVERTER DRIVER ASSEMBLY, 4 TON	-	-	624764R	-
	INVERTER DRIVER ASSEMBLY, 5 TON	-	-	-	624765R
41	REACTOR, 2 & 3 TON	624795R	624795R	-	-
	REACTOR, 4 TON	-	-	624796R	-
	REACTOR, 5 TON	-	-	-	624797R
42	COMPRESSOR TERMINAL BLOCK	632642	632642	632642	632642
43	OUTDOOR FAN TERMINAL BLOCK, 5 TON	-	-	-	632641
44	SET OF WIRES REPLACEMENT (NOT SHOWN)	M0070002	M0070002	M0070002	M0070001
45	TOUCH UP PAINT, GREY (NOT SHOWN)	8983202	8983202	8983202	8983202
46	CONTACTOR, INVERTER, 5 TON	-	-	-	624803
47	PTCR, INVERTER, 5 TON	-	-	-	624804
48	INTERFACE BOARD, 2 TON	624771R	-	-	-
	INTERFACE BOARD, 3 TON	-	624772R	-	-
	INTERFACE BOARD, 4 TON	-	-	624773R	-
	INTERFACE BOARD, 5 TON	-	-	-	624774R
49	THERMISTOR, SENSOR, DISCHARGE TEMP (NOT SHOWN)	624779	624779	624779	624779
50	THERMISTOR, SENSOR, AMBIENT TEMP (NOT SHOWN)	624780	624780	624780	624780
51	THERMISTOR, SENSOR, OD COIL SAT TEMP (NOT SHOWN)	624781	624781	624781	624781
52	THERMISTOR, SENSOR, SUCTION TEMP, 3/4" (NOT SHOWN)	624782	624782	-	-
53	THERMISTOR, SENSOR, SUCTION TEMP, 7/8" (NOT SHOWN)	-	-	624792	624792
54	IGNITION CONTROL, 2 STG, 2 SPD	921967	921967	921967	921967
55	EXHAUST DUCT ASSY.	263420R	263420R	263420R	263420R
56	INDUCER MOTOR, 2 SPD, 230V	921379	921379	921379	921379
57	SWITCH, PRESSURE, DUAL, NO., .50".70"W.C.	632555	632555	632555	632555
58	GASKET, COLLECTOR PAN	689506	689506	689506	689506
59	GASKET, INDUCER MOTOR MOUNTING	689518	689518	689518	689518
60	HEAT EXCH. PANEL ASSY, 4 TUBE, 34"	M0069001R	-	-	-
	HEAT EXCH. PANEL ASSY, 5 TUBE, 34"	-	M0069002R	-	-
	HEAT EXCH. PANEL ASSY, 5 TUBE, 42"	-	-	M0069003R	M0069003R
61	LIMIT SWITCH, MAIN AIR (170/120)	626423	626423	-	-
	LIMIT SWITCH, MAIN AIR (165/145)	-	-	626432	626432
62	BURNER ASSY, 2 STG VALVE, 4 TUBE	M0034105R	-	-	-
	BURNER ASSY, 2 STG VALVE, 5 TUBE	-	293323R	293322R	293322R
63	LIMIT SWITCH, FLAME ROLLOUT 320° F	626547	626547	626547	626547
64	SENSOR, FLAME	632396	632396	632396	632396
65	BURNER, INSHOT	660812	660812	660812	660812
66	ORIFICE, MAIN BURNER, #43 DRILL (NOT SHOWN)	-	-	661043	661043
	ORIFICE, MAIN BURNER, #45 DRILL (NOT SHOWN)	661045	661045	-	-
67	MANIFOLD, GAS, 4 BURNER	664304	-	-	-
	MANIFOLD, GAS, 5 BURNER	-	664305	664305	664305
68	IGNITOR	903179	903179	903179	903179
69	GAS VALVE, 2-STAGE, NAT. GAS ONLY	921816	921816	921816	921816
	GAS VALVE, 2-STAGE, w/ LP REGULATOR SPRINGS	921691	921691	921691	921691
70	PAN, COLLECTOR ASSY, 1.25" ORIFICE	D10326R	-	-	-
	PAN, COLLECTOR ASSY, 1.5" ORIFICE	-	D10328R	-	-
	PAN, COLLECTOR ASSY, 1.69" ORIFICE	-	-	M0074321	M0074321
71	COVER, EXHAUST VENT	265240R	265240R	265240R	265240R
72	PANEL, WEATHER	263880	263880	263880	263880
73	SUPPORT, COIL	263394	263394	263396	263396
74	COIL, INDOOR, 2 & 3 TON	D13001R	D13001R	-	-
	COIL, INDOOR, 4 TON	-	-	2B1961R	-
	COIL, INDOOR, 5 TON	-	-	-	2B4001R
75	CONNECTOR, SWIVEL	664194	664194	664194	664194

Please specify the correct Model No., Serial No, and part number(s) when ordering parts from the nearest authorized dealer or service center.

**R6GI SERIES SINGLE PACKAGE , MULTI-STAGE, VARIABLE SPEED INVERTER
DRIVEN SYSTEM WITH GAS HEATING / ELECTRIC COOLING**

ITEM	DESCRIPTION	R6GI- E24K080X	R6GI- E36K100X	R6GI- E48K120X	R6GI- E60K120X
		921275	921276	921277	921278
76	ELECTRONIC EXPANSION VALVE, 1.8	669905	669905	-	-
	ELECTRONIC EXPANSION VALVE, 2.4	-	-	669906	669906
77	ELECTRONIC EXPANSION VALVE COIL, 1.8	669760	669760	-	-
	ELECTRONIC EXPANSION VALVE COIL, 2.4	-	-	669759	669759
78	EXV PRESSURE TRANSDUCER	624692	624692	624692	624692
79	HARNESS, EXV PRESSURE TRANSDUCER (NOT SHOWN)	634800	634800	634800	634800
80	COMP, SAMSUNG, UG8T265FUAJW	622515R	-	-	-
	COMP, SAMSUNG, UG5T360FUAFK	-	622516R	-	-
	COMP, SAMSUNG, G5T450FUAFX	-	-	622517R	-
	COMP, SAMSUNG, G5T520FUBFX	-	-	-	622518R
81	HARNESS, COMPRESSOR, SHIELDED (NOT SHOWN)	634819	634819	634819	-
	HARNESS, COMPRESSOR, SHIELDED (NOT SHOWN)	-	-	-	634818
82	SWITCH, HIGH PRESS. - AUTO RESET (NOT SHOWN)	632473	632473	632473	632473
83	SWITCH, LOW PRESSURE (NOT SHOWN)	632634	632634	632634	632634
84	GROMMET, COMPRESSOR, (NOT SHOWN)	669914	-	-	-
	GROMMET, COMPRESSOR, (NOT SHOWN)	-	690304	690304	690304
85	COMPRESSOR BOLTS (NOT SHOWN)	600419	600419	600419	600419
86	COVER, TERMINAL BOX,COMP (NOT SHOWN)	669949	-	-	-
	COVER, TERMINAL BOX,COMP (NOT SHOWN)	-	669916	669916	669916
87	COMPRESSOR SOUND BLANKET, 2 TON (NOT SHOWN)	690526	-	-	-
	COMPRESSOR SOUND BLANKET, 3 & 4 TON (NOT SHOWN)	-	690527	690527	-
	COMPRESSOR SOUND BLANKET, 5 TON (NOT SHOWN)	-	-	-	690528
88	COMPRESSOR BASE PAD (NOT SHOWN)	690608	-	-	-
	COMPRESSOR BASE PAD (NOT SHOWN)	-	689975	689975	689975
89	ACCUMULATOR, STAND PIPE, 41 IN^3	669832	669832	-	-
	ACCUMULATOR, STAND PIPE, 50 IN^3	-	-	669833	669833
90	ACCUMULATOR BRACKET	2B7701	2B7701	2B7701	2B7701
91	DRIER, FILTER, UNIFLOW, 8 IN^3	669764	669764	669764	669764
92	COIL, OUTDOOR, 2 & 3 TON	2B8431R	2B8431R	-	-
	COIL, OUTDOOR, 4 TON	-	-	2B8441R	-
	COIL, OUTDOOR, 5 TON	-	-	-	2B8451R
93	REPL. HAIL GUARD KIT (NOT SHOWN)	921213	921213	921213	921213
94	GUARD, COIL (FORMED) (NOT SHOWN)	2B8891R	2B8891R	-	-
	GUARD, COIL (FORMED) (NOT SHOWN)	-	-	2B8901R	-
	GUARD, COIL (FORMED) (NOT SHOWN)	-	-	-	2B8911R
95	FAN, GRILLE	669335	669335	669335	669335
96	FAN ORIFICE	295481R	295481R	295481R	295481R
97	MOTOR, OUTDOOR FAN	622648R	622648R	-	-
	MOTOR, OUTDOOR FAN	-	-	622662R	622662R
98	HARNESS, OD MOTOR, POWER (NOT SHOWN)	634810	634810	634810	634810
99	HARNESS, OD MOTOR, CONTROL (NOT SHOWN)	634811	634811	634811	634811
100	FAN, BLADE	667361	667361	667361	667361
101	PANEL, BLOWER DISCHARGE, 34"	281492	281492	-	-
	PANEL, BLOWER DISCHARGE, 42"	-	-	281495	281495
102	BLOWER SHELF	283932	283932	283932	283932
103	CONTROL BLOWER VSHE BOARD	921968	921968	921968	921968
104	CONTROLS BRACKET	2B7871	2B7871	2B7871	2B7871
105	LOW VOLTAGE DIVIDER	2C2341	2C2341	2C2341	2C2341
106	TERMINAL BLOCK, LOW VOLTAGE	632475	632475	632475	632475
107	TERMINAL BLOCK, 2-POLE	632214	632214	632214	632214
108	TERMINAL BLOCK, 2-POLE W/180 OHM RESISTOR	632635	632635	-	-
	TERMINAL BLOCK, 2-POLE W/300 OHM RESISTOR	-	-	632659	632659
109	ACCESS FITTING (NOT SHOWN)	663812	663812	663812	663812

Please specify the correct Model No., Serial No, and part number(s) when ordering parts from the nearest authorized dealer or service center.



NORDYNE
 COMPLETE COMFORT. GENUINE VALUE.

Specifications & illustrations subject to change
 without notice or incurring obligations (10/13).



709226B (Replaces 709226A)