

Instructions for Assembling Replacement Venter Motor & Motor Mounting Plate

Applies: Replacement Kits, P/N's 132377, 132378 & 132379 for (C)(H)(HC)RP/ RPV Series 3, 5 & 6 and (H)(S)SC; SC(A)(B)(E) Series 3 & 5 Heaters

Description/ Application

These instructions apply to the replacement kits listed above. Each kit includes a venter motor with a capacitor and a hardware bag; including a selection of mounting plates. Prior to installation on the heater, the replacement venter motor must be attached to a new mounting plate. To be multifunctional, the hardware package in each kit includes four motor mounting plates that are used with all voltages of motors. Selection of the appropriate mounting plate depends on the model and size of furnace being serviced.

Components

Qty	Description
1	Venter Motor and Capacitor Assembly
4	Motor Mounting Plates, one each of P/N; 131445, 131446, 131447 & 131448
2	Locking Nuts #8-32, P/N 31522

Instructions

WARNING:

Turn off the gas and the electric before servicing any heater. All service should be performed by a qualified service technician.

1. Verify Voltage Agreement:

Check the replacement motor label and the heater rating plate to verify the agreement of the motor voltage and the supply voltage of the furnace being serviced.

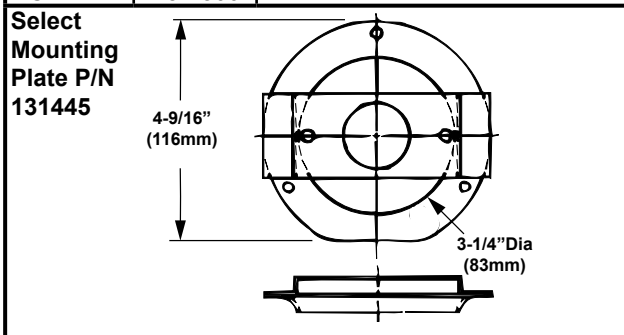
Kit P/N's		132377	132378	132379	132377
Supply Voltage		115V	208V & 230V	460V	575V
Venter Motor Assembly in the Kit		131410	131415	165986	131410
<i>Venter Motor Assembly Includes:</i>					
Venter Motor	P/N	163891	163892	163893	163891
	Magnetek #	JE1F026	JE1F027	JE1F026	JE1F026
Capacitor	P/N	163894			
	Magnetek #	60P52-561-8			

2. Select the Motor Mounting Plate:

Refer to the **APPLICATION TABLES 1, 2, 3 & 4** and locate the Model/Size of furnace being serviced. (*NOTE: These instructions do not apply to RPV or SC Models prior to Series 3*). Measure each plate in the kit, comparing its size and hole size to the dimensions on the drawing. Select the mounting plate that applies to the furnace being serviced. The remaining other three mounting plates will not be used.

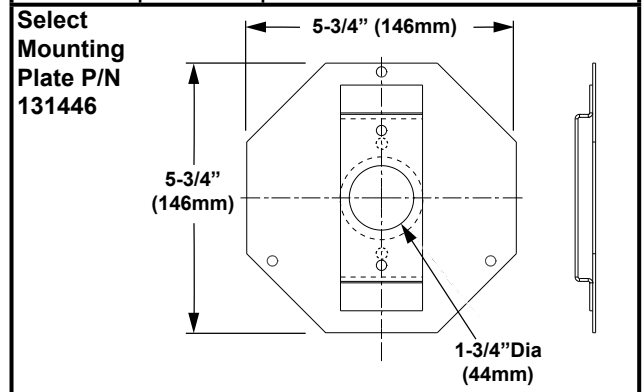
APPLICATION TABLE 1

Applies to:		
Model	Sizes	Application Details
RP	125 - 350	460V furnaces manufactured prior to 3/94 (Serial No Code ATC); 115/208/230/575 V furnaces manufactured prior to 7/94 (Serial No Code ATG)
CRP	125 - 300	
HRP	125 - 350	
HCRP	125 - 300	
RPV	125 - 350	Series 3, 5 & 6 ONLY
CRPV	125 - 300	
HRPV	125 - 350	
HCRPV	125 - 300	



APPLICATION TABLE 2

Applies to:		
Model	Size	Application Details
CRP	400	460V furnaces manufactured prior to 3/94 (Serial No Code ATC); 115/208/230/575 V furnaces manufactured prior to 7/94 (Serial No Code ATG)
HCRP	400	
CRPV	400	Series 3, 5 & 6 ONLY
HCRPV	400	



APPLICATION TABLE 3

Applies to:			Select Mounting Plate P/N 131447
Model	Sizes	Application Details	
SC	125 - 300	Series 3 & 5 ONLY	
HSC	125 - 300		
SCA	125 - 300		
SCB	125 - 300		
SCE	125 - 300		
SSC	250 - 300	Duct furnaces in packaged Models SSCBL 500 & 600	

APPLICATION TABLE 4

Applies to:			Select Mounting Plate P/N 131448
Model	Sizes	Application Details	
RP	400	460V furnaces manufactured prior to 3/94 (Serial No Code ATC); 115/208/230/575 V furnaces manufactured prior to 7/94 (Serial No Code ATG)	
HRP	400		
RPV	400	Series 3, 5 & 6 ONLY	
HRPV	400		
SC	350 - 400	Series 3 & 5 ONLY	
HSC	350 - 400		
SCA	350 - 400		
SCB	350 - 400		
SCE	350 - 400		
SSC	350 - 400	Duct furnaces in packaged Models SSCBL 500 & 600	

3. Remove the Venter Motor Assembly:

Mark and disconnect the venter motor wires. Remove the venter motor assembly from the heater, saving all hardware including the support ring on SC Series Models (See **FIGURE 1**)

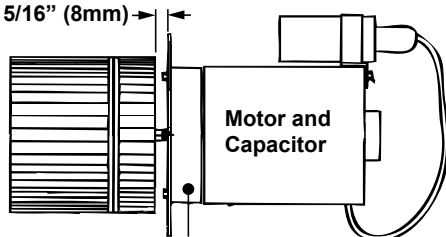
4. Assemble the New Motor and Mounting Plate as Selected in Step 2:

Model Series RP/RPV - With the rectangular bracket toward the motor, position the motor mounting plate assembly over two of the motor studs. Use the locking nuts in the kit to attach the motor studs to the bracket.

Model Series SC - Re-use the spacers and support ring from the original assembly. Place the spacers over the motor studs and support ring over the bracket on the mounting plate. With the rectangular bracket and support ring toward the motor, position the motor plate assembly over two of the motor studs. Use the locking nuts in the kit to attach the motor studs to the bracket.

FIGURE 1 - Assemble Motor & Plate and Attach to the Venter Wheel

IMPORTANT:
All Models
5/16" (8mm)



Motor Support Ring, P/N 125346
required on SC Series Models **ONLY**

SC Series Models - IMPORTANT: When attaching the motor to the plate, slide the spiral spacers over the motor studs and install the motor support ring

5. Install the Replacement Venter Motor Assembly:

Re-use the hardware to attach the venter wheel to the motor shaft. Always leave a 5/16" gap between the wheel and the motor mounting plate (see **FIGURE 1**).

Make wiring connections according to the wiring diagram. Replace all panels.

Follow the instructions on the lighting instruction plate to re-light the furnace.

CHECK ALL SAFETY FEATURES FOR PROPER OPERATION

Specifications & illustrations subject to change without notice and without incurring obligations.

©Nortek Global HVAC, LLC 2016. All rights reserved.

All marks are the property of their respective organizations.

O'Fallon, MO | Printed in U.S.A. (7/16)

FORM CP-RP/SC-V (7-16), PN132380 R3