

High CFM Conversion Kit for Model SC, P/N 263309

Description/ Application

The purpose of this kit is to convert a Model SC unit for use in an application that requires a higher CFM than the standard unit. Installation of this kit will allow for use of the furnace with the CFM range listed in the table.

Model and Size	High Air Throughput (CFM) with Kit, P/N 263309	
	MAXIMUM	MINIMUM
SC 100	3700	980
SC 125	4630	1230
SC 150	5555	1480
SC 175	6480	1725
SC 200	7405	1975
SC 225	8330	2220
SC 250	9255	2465
SC 300	11110	2960
SC 350	12900	3455
SC 400	14815	3950

Components of Kit P/N 263309

This kit includes: (1) Limit Control, 145°F, blue label, **P/N 50418**
(1) High CFM Conversion Label, **P/N 263310**
(1) Instruction Sheet, **P/N 263311**

WARNING: This conversion shall be done by a qualified service agency in accordance with the manufacturer's instructions and all applicable codes and requirements of the authority having jurisdiction. If the information in these instructions is not followed exactly, a fire, explosion or production of carbon monoxide may result causing property damage, personal injury or loss of life. The qualified service agency performing this work assumes responsibility for the conversion of this appliance to provide for higher CFM.

Conversion Instructions

WARNING: The instructions in this sheet are designed to prepare a Reznor duct furnace for increased air throughput conversion prior to installation. If your duct furnace is installed, for your safety, turn off the gas and the electric before servicing.

1. Fill in the Field Conversion Label - Complete the information.

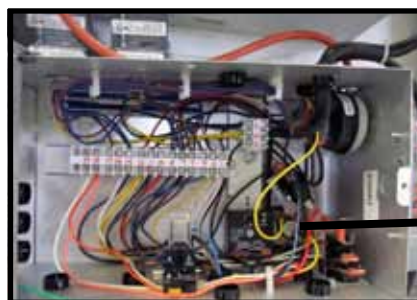
IMPORTANT

This appliance has been converted on _____
Cet appareil a été converti _____ *(date)*
to _____ cfm maximum throughput
au _____ pi³/min consommation maximum
to _____ cfm minimum throughput
au _____ pi³/min consommation minimum
by / par _____ *(name & address of company making this conversion)* ,
with kit no. / avec la kit no. **263309**
which accepts the responsibility that this conversion has been properly made.
qui accepte la responsabilité que cette conversion a été correctement faite.

263310

2. Install the Limit Control -

Remove the control compartment panel and open the electrical box. Locate the limit control. Mark the wires and remove the control. Using the same screws, install the limit control from this conversion package and reconnect the wires.



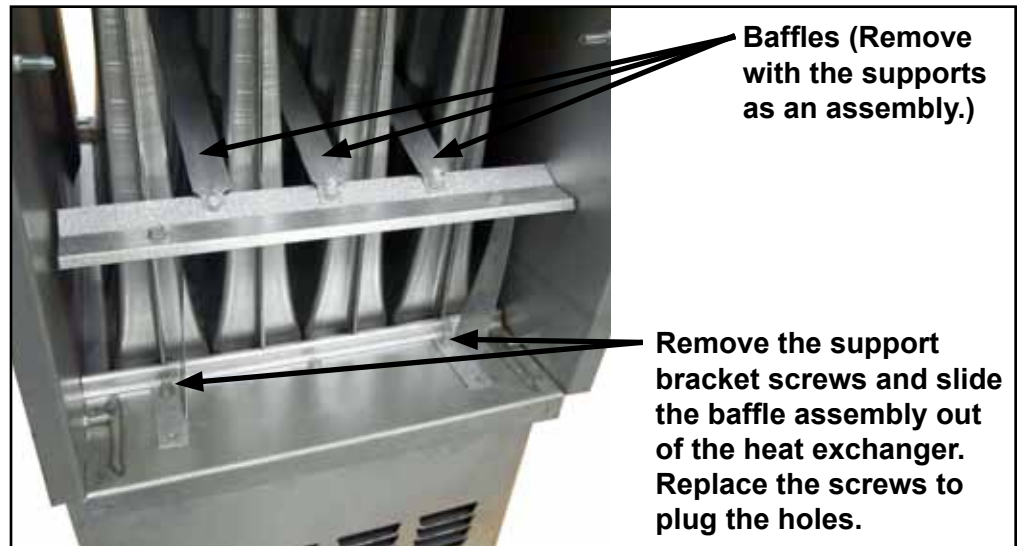
Limit
Control

Electrical Box in the Control Compartment

Conversion Instructions (cont'd)

Discharge Air End of the Heat Exchanger showing the Baffle Assembly to be Removed

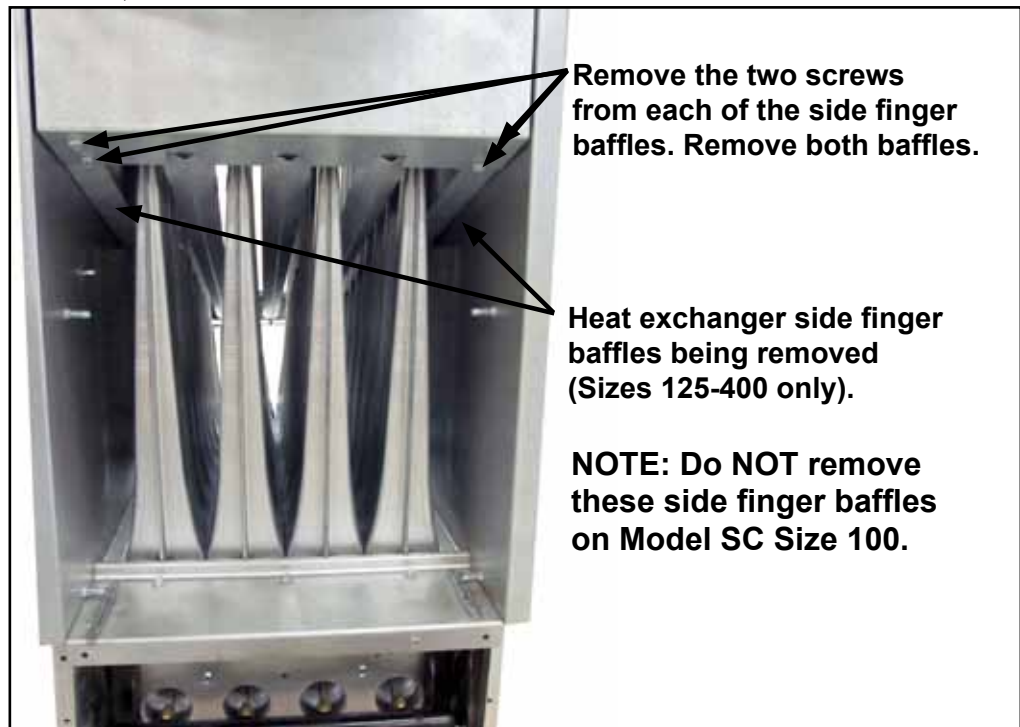
3. **Remove the Heat Exchanger Baffles** - Refer to the illustration and identify the air baffles to be removed. Remove the screws from the support brackets and slide the entire baffle assembly out of the heat exchanger. Reinstall the screws to plug the holes.



Conversion is complete for Model SC Size 100; skip to Step 5.

4. **Sizes 125-400 only** - Remove the Side Finger Baffles – Refer to the illustration below showing the entering air side of the heat exchanger (baffles shown above have already been removed). Identify the side finger baffles. Remove both side baffles; each baffle is attached with two screws.

Entering Air End of the Heat Exchanger showing the Two Side Finger Baffles to be Removed



Conversion is complete for Sizes 125-400; continue to Step 5.

5. Select a location adjacent to the rating plate for the conversion label. Being sure the surface is clean and dry, adhere the conversion label that was completed in Step 1.

At startup, test for proper operation. Be sure to comply with the air throughputs in the table on page 1.

www.ReznorHVAC.com; (800) 695-1901

©2014 Reznor LLC, All rights reserved.

Trademark Note: Reznor® is registered in at least the United States.

05/14 (Serial No. Date Code BNE) Form CP-SC-CFM Conversion (Version .1)

REZNOR®

Form CP-SC-CFM Conversion, P/N 263311, Page 2