

## REPLACEMENT PARTS LIST

Gas Heating / Electric Cooling Package Units  
13 SEER, 3-Phase, 208/230V Models  
R6GD Series



## R6GD Gas Heating / Electric Cooling Package Units 13 SEER, 3 Phase, 280/230V Models

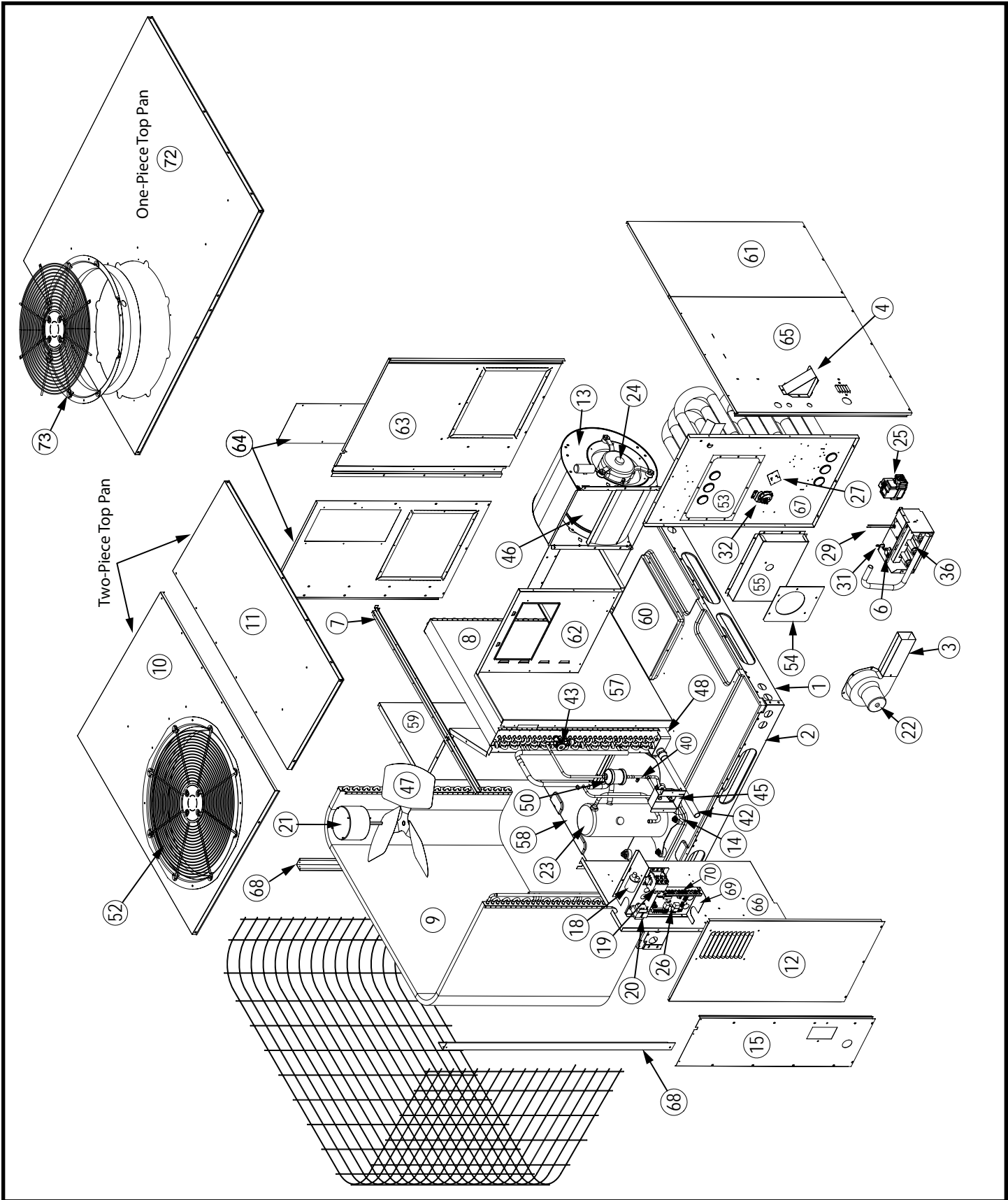
ITEM	DESCRIPTION	X36C-072(*)	X36C-096(*)	X48C096(*)	X48C120(*)	X60C096(*)	X60C120(*)
		919956	919958	919960	919962	919964	919966
1	RAIL, BASE, SHORT	277551	277551	277551	277551	277551	277551
2	RAIL, BASE, LONG	277552	277552	277552	277552	277552	277552
3	EXHAUST DUCT ASSY.	263420R	263420R	263420R	263420R	263420R	263420R
4	VENT COVER ASSY.	265040R	265040R	265040R	265040R	265040R	265040R
5	PORT, HI FLOW (NOT SHOWN)	664329	664329	664329	664329	664329	664329
6	LIM, 1/2D, 320	626547	626547	626547	626547	626547	626547
7	CHANNEL, DRAIN	279722R	279722R	279722R	279722R	279722R	279722R
8	COIL, INDOOR	D13001R	D13001R	D13011R	D13011R	283621R	283621R
9	COIL, OUTDOOR	2B6591R	2B6591R	2B6731R	2B6731R	2B6741R	2B6741R
10	TOP RIGHT PAN ASSY.	292441R	292441R	292441R	292441R	292441R	292441R
11	TOP PAN ASSY - LEFT	293781R	293781R	293781R	293781R	293781R	293781R
12	SERVICE PANEL ASSY.	D07242R	D07242R	D07243R	D07243R	D07243R	D07243R
13	BLOWER HSG ASSY	297214	297214	297214	297214	297219	297219
14	BRACKET, EXT. SERV PT, HI-FLOW	298551R	298551R	298551R	298551R	298551R	298551R
15	PANEL, FRONT	298892R	298892R	298893R	298893R	298893R	298893R
16	NUT, HEX, BLACK (NOT SHOWN)	606261	606261	606261	606261	606261	606261
17	NUTHN, H, 1/2-20X.313, BRASS (NOT SHOWN)	618084	618084	618084	618084	618084	618084
18	CAPACITOR, 7.5/370	622535	622535	622535	622535	622535	622535
19	CONTACTOR, 3 POLE/30A W/AUX. SW	621832	621832	621832	621832	621832	621832
20	TRANSFORMER 40 VA	622336	622336	622336	622336	622336	622336
21	FAN MOTOR	621721	621721	621721	621721	621721	621721
22	INDUCER MOTOR	621793	621793	621793	621793	621793	621793
23	COMPRESSOR, ZP31K5E	919609	919609	-	-	-	-
	COMPRESSOR, ZP42K5E	-	-	919610	919610	-	-
	COMPRESSOR, ZP54K5E	-	-	-	-	919611	919611
24	MOTOR, X-13, 1/2HP	M0023911R	M0023911R	-	-	-	-
	MOTOR, X-13, 3/4HP	-	-	M0023912R	M0023912R	-	-
	MOTOR, X-13, 1HP	-	-	-	-	M0023909R	M0023909R
25	GAS VALVE	624657	624657	624657	624657	624657	624657
26	CONTROL BOARD	919943	919943	919943	919943	919943	919943
27	SWITCH, LIMIT (165/145)	-	626432	626432	626432	626432	626432
	SWITCH, LIMIT (200/180)	626467	-	-	-	-	-
28	FUSE, 3-AMP (NOT SHOWN)	632261	632261	632261	632261	632261	632261
29	IGNITOR	632320	632320	632320	632320	632320	632320
30	SET OF WIRES (NOT SHOWN)	M0038303	M0038303	M0038303	M0038303	M0038303	M0038303
31	SENSOR, FLAME	632396	632396	632396	632396	632396	632396
32	SWITCH, PRESSURE, NO, 0.75	632427	632427	632427	632427	632427	632427
33	HTR, CRANKCASE, 240V/40W, 60" -(NOT SHOWN)	632509	632509	632509	632509	632509	632509
34	SWITCH, HIGH PRESSURE (NOT SHOWN)	632401	632401	632401	632401	632401	632401
35	PLUG, MOLDED, HV (NOT SHOWN)	634718	634718	634718	634718	634718	634718
36	BURNER,INSHOT	660812	660812	660812	660812	660812	660812
37	ORIFICE, MAIN BURNER, #43 (NOT SHOWN)	661043	661043	661043	661043	661043	661043
38	CORE, CHARGING PORT (NOT SHOWN)	662103	662103	662103	662103	662103	662103
40	FITTING, ACCESS	663812	663812	663812	663812	663812	663812
41	CAP, SERVICE PORT, BRASS (NOT SHOWN)	663818	663818	663818	663818	663818	663818
42	DRAIN TUBE ASSY	D05700	D05700	D05700	D05700	D05700	D05700
43	THERMAL EXPANSION VALVE, ID (NOT SHOWN)	664349	664349	664350	664350	664275	664275
44	CORE, PORT, HI FLOW, BRASS (NOT SHOWN)	664331	664331	664331	664331	664331	664331
45	FITTING, PANEL MNT, HI-FLOW, 3/8"	664393	664393	664393	664393	664393	664393

Please specify the correct Model No., Serial No, and Part No. when ordering parts from the nearest authorized dealer or service center.

## R6GD Gas Heating / Electric Cooling Package Units 13 SEER, 3 Phase, 280/230V Models

ITEM	DESCRIPTION	X36C-072(*)	X36C-096(*)	X48C096(*)	X48C120(*)	X60C096(*)	X60C120(*)
		919956	919958	919960	919962	919964	919966
46	WHEEL, BLOWER 10 X 10	667207	667207	667207	667207	-	-
	WHEEL, BLOWER 11 X 10	-	-	-	-	667260	667260
47	FAN BLADE	667278	667278	667278	667278	667278	667278
48	PAN, DRAIN	669190	669190	669190	669190	669190	669190
49	REPLACEMENT HAIL GUARD KIT (NOT SHOWN)	921213	921213	921213	921213	921213	921213
50	DRIER, FILTER, UNIFLOW, 8 IN <sup>3</sup>	669764	669764	669764	669764	669764	669764
51	BLOWER SHELF	283932	283932	283932	283932	283932	283932
52	GRILLE, TOP-24" BLACK	669404	669404	669404	669404	669404	669404
53	GASKET, COLLECTOR PAN	689506	689506	689506	689506	689506	689506
54	GASKET, INDUCER	689518	689518	689518	689518	689518	689518
55	COLLECTOR PAN ASSY	D10322R	D10323R	D10323R	D10324R	D10323R	D10324R
56	TOUCH UP PAINT, STERLING GREY	903598	903598	903598	903598	903598	903598
57	PANEL, HEAT EX. DIVIDER	D05072R	D05072R	D05073R	D05073R	D05073R	D05073R
58	BOTTOM PAN ASSY.	D05480R	D05480R	D05480R	D05480R	D05480R	D05480R
59	DIVIDER PANEL ASSY.	D05502R	D05502R	D05503R	D05503R	D05503R	D05503R
60	DUCT CAP ASSY.	D05530R	D05530R	D05530R	D05530R	D05530R	D05530R
61	BLOWER PANEL ASSY	D05542R	D05542R	D05543R	D05543R	D05543R	D05543R
62	PANEL, BLOWER DISCHARGE	281493	281493	281493	281493	281493	281493
63	SUPPLY PANEL ASSY.	D05552R	D05552R	D05553R	D05553R	D05553R	D05553R
64	RETURN PANEL ASSY, W/ACCESS DOOR	286702R	286702R	286701R	286701R	286701R	286701R
65	CORNER PANEL ASSY.	D05622R	D05622R	D05623R	D05623R	D05623R	D05623R
66	PANEL, CLOSE-OFF ASSY.	D05682R	D05682R	D05683R	D05683R	D05683R	D05683R
67	HEAT EXCH. PANEL ASSY, 3, 34"	D10312R	-	-	-	-	-
	HEAT EXCH. PANEL ASSY, 4, 34"	-	D10306R	-	-	-	-
	HEAT EXCH. PANEL ASSY, 4, 38"	-	-	D10308R	-	D10308R	-
	HEAT EXCH. PANEL ASSY, 5, 38"	-	-	-	D10309R	-	D10309R
68	CORNER POST	D09996R	D09996R	D09997R	D09997R	D09997R	D09997R
69	CONTROL BRACKET	2A9611	2A9611	2A9611	2A9611	2A9611	2A9611
70	TERMINAL BOARD	632539	632539	632539	632539	632539	632539
71	FILTER RACK (NOT SHOWN)	M0021601	M0021601	M0021601	M0021601	M0021601	M0021601
72	ONE-PIECE TOP PAN KIT (ORIFICE INCLUDED)	M0034721	M0034721	M0034721	M0034721	M0034721	M0034721
73	DROP-IN ORIFICE	263210	263210	263210	263210	263210	263210

Please specify the correct Model No., Serial No, and Part No. when ordering parts from the nearest authorized dealer or service center.



**NORDYNE**  
 COMPLETE COMFORT. GENUINE VALUE.

Specifications & illustrations subject to change without notice or incurring obligations.  
 O' Fallon, MO | Printed in U.S.A. (01/13)



708830B (Replaces 708830A)