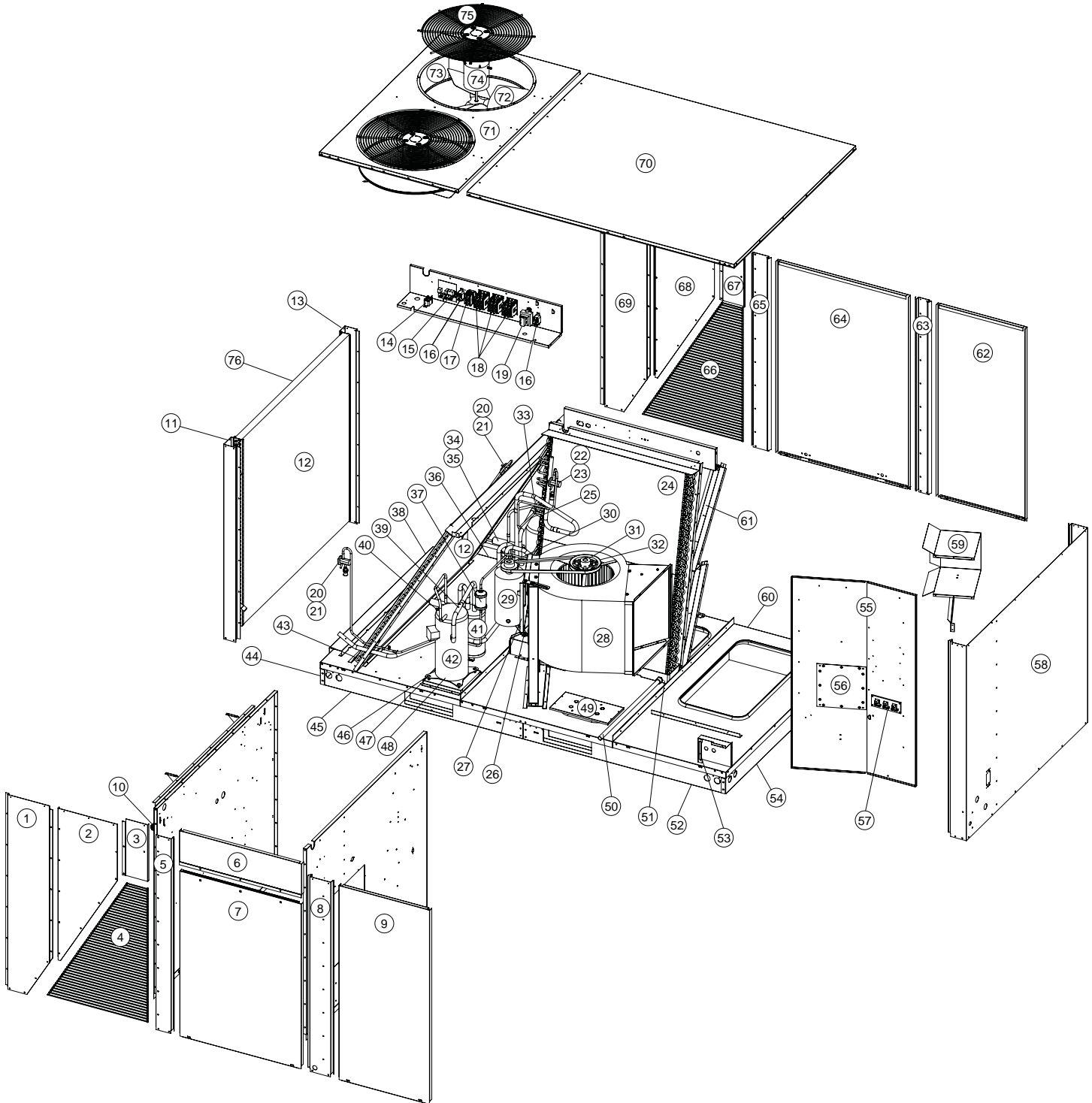
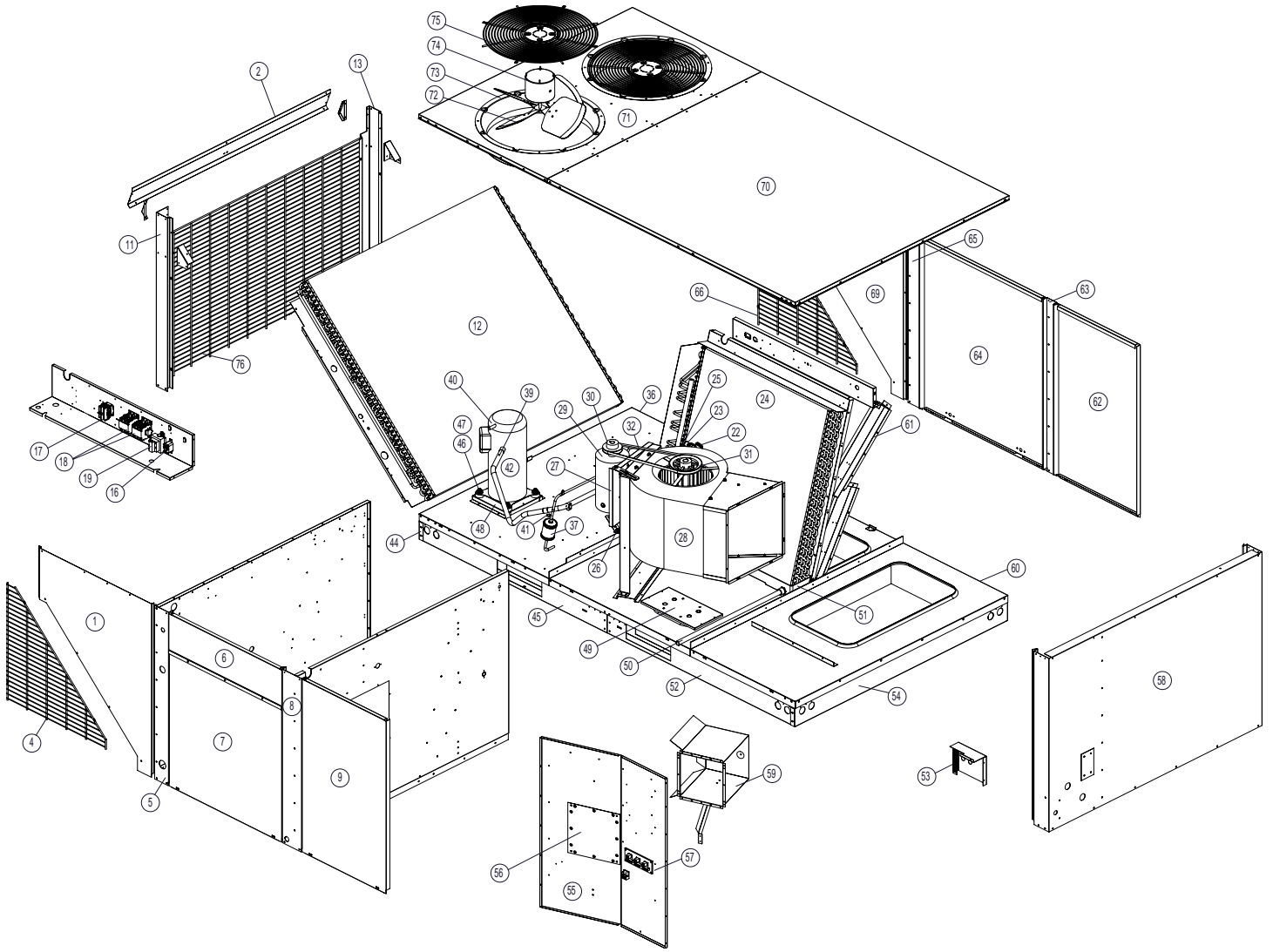


REPLACEMENT PARTS LIST

Single Package
 Electric Heating / Electric Cooling Unit
 P6SP -072/090/120 Series



7.5 Ton & 10 Ton Packaged Air Conditioner



6 Ton Packaged Air Conditioner

P6SP Series Single Package Electric Heating / Electric Cooling, 3-phase Units

ITEM	DESCRIPTION	P6SP-072*		P6SP-090*		P6SP-120*	
		208/230V	460V	208/230V	460V	208/230V	460V
1	Panel, Coil Access-Front	2A7161R	2A7161R	2A1941R	2A1941R	291301R	291301R
2	Panel, Ext. Condenser-Front	—	—	—	—	291361R	291361R
	Panel, Outdoor Coil Top Closeoff -6T	2A7251R	2A7251R	—	—	—	—
3	Panel, Wire Access-Front	—	—	2A2041R	2A2041R	291371R	291371R
4	Guard, Grille, Comp, Closeoff-Front	669802	669802	669775	669775	669625	669625
5	Panel, Ext. Condenser/Blower Divider-Front	M0036985R	M0036985R	M0036985R	M0036985R	M0025180R	M0025180R
6	Panel, Control Access	292131R	292131R	292131R	292131R	292131R	292131R
7	Panel, Blower Access	M0036976R	M0036976R	M0036976R	M0036976R	M0025173R	M0025173R
8	Panel, Ext. Blower/Heat Exchanger	M0036973R	M0036973R	M0036973R	M0036973R	M0025189R	M0025189R
9	Panel, Element Access	M0036986R	M0036986R	M0036986R	M0036986R	M0025124R	M0025124R
10	Capacitors	622132	622132	622132	622132	622132	622132
11	Post, Corner-Front	2A7231R	2A7231R	288782R	288782R	288781R	288781R
12	Complete Coil Assembly, Outdoor, 10 Ton	2A7831R	2A7831R	2A1821R	2A1821R	299851R	299851R
13	Post, Corner-Back	2A7241R	2A7241R	288772R	288772R	288771R	288771R
14	Heat Pump Only (N/A)	—	—	—	—	—	—
15	Heat Pump Only (N/A)	—	—	—	—	—	—
16	Relay, DPST	621867	621867	621867	621867	621867	621867
17	Contactora, 2 Pole	621668	621668	621668	621668	621668	621668
18	Contactora, 3 Pole	621832	621832	621832	621832	621832	621832
19	Transformer, 208-230V, 75 VA w/ 4 Amp Crkt. Brkr.	621783	—	621783	—	621783	—
	Transformer, 460V, 75 VA w/ 4 Amp Crkt. Brkr.	—	621795	—	621795	—	621795
20	Heat Pump Only (N/A)	—	—	—	—	—	—
21	Heat Pump Only (N/A)	—	—	—	—	—	—
22	Thermostatic Expansion Valve-Indoor, 10 Ton	669806	669806	669711	669711	669578	669578
23	Distributor, Indoor, 8 Circuit (Not Shown)	—	—	663586	663586	663585	663585
	Distributor, Indoor, 13 Circuit (Not Shown)	664471	664471	—	—	—	—
24	Complete Coil Assembly, Indoor, 10 Ton	2A7391R	2A7391R	2A1201R	2A1201R	299911R	299911R
25	Switch, Evaporator Freezestat	626476	626476	626476	626476	626476	626476
26	Belt Tension Bar	606241	606241	606241	606241	606241	606241
27	Motor Mounting Plate	2A8791R	2A8791R	388080R	388080R	388080R	388080R
28	Blower Housing and Wheel - 15 x 15	667284	667284	667284	667284	667285	667285
29	Blower Motor, 1.5 HP, 208-230V /460V, 3Ph.	—	—	622390R	622390R	622390R	622390R
	Blower Motor, 1.0 HP, 208-230V / 460V, 3Ph.	622389R	622389R	—	—	—	—
30	Adjustable Motor Sheave, 1VP50 x 7/8"	—	—	667371	667371	667371	667371
	Adjustable Motor Sheave, 1VP44 x 7/8"	—	—	667317	667317	—	—
	Adjustable Motor Sheave, 1VP40 x 7/8"	667290	667290	667290	667290	667290	667290
31	Pulley, Indoor Blower, BK75	—	—	—	—	667376	667376
	Pulley, Indoor Blower, AK54	—	—	667379	667379	—	—
	Pulley, Indoor Blower, AK56	—	—	667380	667380	—	—
	Pulley, Indoor Blower, AK59	—	—	667381	667381	—	—
	Pulley, Indoor Blower, AK66	667386	667386	—	—	—	—
32	Belt, Blower Drive, B49	—	—	—	—	669195	669195
	Belt, Blower Drive, B51	—	—	—	—	669722	669722
	Belt, Blower Drive, A42	—	—	669483	669483	—	—
	Belt, Blower Drive, A43	—	—	669194	669194	—	—
	Belt, Blower Drive, A44	669756	669756	—	—	—	—
33	Switch, High Pres - Man Reset [Stg 2] (Not Shown)	—	—	632545	632545	632507	632507
	Switch, Low Pres - Auto Reset [Stg 2] (Not Shown)	—	—	632540	632540	632479	632479
34	Heat Pump Only (N/A)	—	—	—	—	—	—
35	Heat Pump Only (N/A)	—	—	—	—	—	—
36	Rail, Base - Back Left	289641R	289641R	289641R	289641R	289641R	289641R
37	Filter Drier	669753	669753	669492	669492	669493	669493
38	Condenser Coil Spacer	—	—	290841R	290841R	290841R	290841R
39	Switch, Low Pres - Auto Reset [Stg 1] (Not Shown)	632522	632522	632522	632522	632335	632335
40	Switch, High Pres - Man Reset [Stg 1] (Not Shown)	632534	632534	632534	632534	632506	632506
41	Cap, Service Port, Brass	663818	663818	—	—	—	—
	Cover, Service Port Cap, Pink R-410a	664127	664127	—	—	—	—
	Valve, Service Extension, 24"	664472R	664472R	—	—	—	—

Please specify the correct Model No., Serial No., and part no(s) when ordering parts from the nearest authorized dealer or service center.

P6SP Series Single Package Electric Heating / Electric Cooling, 3-phase Units

ITEM	DESCRIPTION	P6SP-072*		P6SP-090*		P6SP-120*	
		208/230V	460V	208/230V	460V	208/230V	460V
42	Compressor, ZP51K5E-TF5-130 (208-230 V)	—	—	—	—	920332	—
	Compressor, ZP51K5E-TFD-130 (460 V)	—	—	—	—	—	920333
	Compressor, ZP39K5E-TF5-130 (208-230 V)	—	—	920365	—	—	—
	Compressor, ZP39K5E-TFD-130 (460 V)	—	—	—	920364	—	—
	Compressor, ZP61KCE-TF5-830 (208-230 V)	920579	—	—	—	—	—
	Compressor, ZP61KCE-TFD-830 (460 V)	—	920580	—	—	—	—
43	Heat Pump Only (N/A)	—	—	—	—	—	—
44	Rail, Base - Condenser End	289621R	289621R	289621R	289621R	289621R	289621R
45	Rail, Base - Front Left	289631R	289631R	289631R	289631R	289631R	289631R
46	Compressor Bolt, 5/16-18 x 1-1/2"	600400	600400	600400	600400	600400	600400
47	Compressor Mounting Grommet	668530	668530	668530	668530	668530	668530
48	Crankcase Heater - 240V / 70W [Stg 1] (Not Shown)	632345	—	632345	—	—	—
	Crankcase Heater - 460V / 70W [Stg 1] (Not Shown)	—	632346	—	632346	—	—
	Crankcase Heater - 240V / 40W [Stg 1] (Not Shown)	—	—	—	—	632510	—
	Crankcase Heater - 240V / 40W [Stg 2] (Not Shown)	—	—	—	—	632511	—
	Crankcase Heater - 240V / 40W [Stg 1] -7.5T(Not Shown)	—	—	632541	—	—	—
	Crankcase Heater - 240V / 40W [Stg 2] -7.5T(Not Shown)	—	—	632542	—	—	—
	Crankcase Heater - 480V / 40W [Stg 1] (Not Shown)	—	—	—	—	—	632512
	Crankcase Heater - 480V / 40W [Stg 2] (Not Shown)	—	—	—	—	—	632513
	Crankcase Heater - 480V / 40W [Stg 1] -7.5T(Not Shown)	—	—	—	632543	—	—
Crankcase Heater - 480V / 40W [Stg 2] -7.5T(Not Shown)	—	—	—	632544	—	—	
49	Bottom Power Entry Cover	263920R	263920R	263920R	263920R	263920R	263920R
50	Drain Pipe Assembly	664295	664295	664295	664295	664295	664295
51	Condensate Drain Pan	669562	669562	669562	669562	669562	669562
52	Rail, Base - Front Right	292051R	292051R	292051R	292051R	292051R	292051R
53	Terminal Board, Low Voltage	632474	632474	632474	632474	632474	632474
54	Rail, Base - Heat Exchange End	289991R	289991R	289991R	289991R	289991R	289991R
55	Panel, Electric Element	M0036982R	M0036982R	M0036982R	M0036982R	M0025136R	M0025136R
56	Element Close Off Plate	M0025139R	M0025139R	M0025139R	M0025139R	M0025139R	M0025139R
57	Terminal Board, High Voltage, 3 Pole - 2/0 AWG	632366	632366	632366	632366	632366	632366
58	Panel, Ext. HX End	M0036980R	M0036980R	M0036980R	M0036980R	M0025171R	M0025171R
59	Electric Element Housing	292551R	292551R	292551R	292551R	292551R	292551R
60	Rail, Base - Back Right	292061R	292061R	292061R	292061R	292061R	292061R
61	Filters 16 X 25 X 2 - U.L. Class (Not Shown)	—	—	—	—	668932	668932
	Filters 16 X 20 X 2 - U.L. Class (Not Shown)	668940	668940	668940	668940	—	—
62	Panel, HX Tube Access	D06731R	D06731R	386151R	386151R	386152R	386152R
63	Panel, Ext. HX / Evaporator Divider	M0036974R	M0036974R	M0036974R	M0036974R	M0025172R	M0025172R
64	Panel, Evaporator Access	D06821R	D06821R	D07161R	D07161R	D07162R	D07162R
65	Panel, Ext. Evaporator / Condenser Divider	M0036975R	M0036975R	M0036975R	M0036975R	M0025174R	M0025174R
66	Guard, Grille, Comp, Closeoff-Back	669804	669804	669776	669776	669673	669673
67	Panel, Wire Access - Back	—	—	2A2061R	2A2061R	292001R	292001R
68	Panel, Ext. Condenser - Back	—	—	—	—	291451R	291451R
69	Panel, Coil Access - Back	2A7171R	2A7171R	2A2051R	2A2051R	291541R	291541R
70	Pan, Heat Exchanger/Evaporator Top	M0025178R	M0025178R	M0025178R	M0025178R	M0025178R	M0025178R
71	Pan, Condenser	2A3071R	2A3071R	295491R	295491R	295491R	295491R
72	Blade, Condenser Fan	667382	667382	667364	667364	667364	667364
73	Orifice, Condenser	263210R	263210R	295481R	295481R	295481R	295481R
74	Motor, Outdoor Fan	2A8481R	2A8482R	622252R	622253R	622252R	622253R
75	Grille, Condenser Fan - 24"	669404	669404	669202	669202	669202	669202
76	Hail Guard, Plastic Mesh (Not Shown)	—	—	669781	669781	669653	669653
	Guard, Grille, 6T End, Black	669803	669803	—	—	—	—

Please specify the correct Model No., Serial No., and part no(s) when ordering parts from the nearest authorized dealer or service center.



Specifications & illustrations subject to change without notice or incurring obligations.
O' Fallon, MO | Printed in U.S.A. (12/12)



708878B (Replaces 708878A)