

## REPLACEMENT PARTS LIST

**Gas Heating / Electric Cooling Package Units  
13 SEER, 3-Phase, 460V Models  
R6GD Series**



Premium Model Shown

### IMPORTANT

- This document is primarily intended to assist qualified individuals experienced in the proper repair or servicing of this appliance. Only factory authorized parts or accessory kits may be used with this product. Improper installation, service, adjustment, or maintenance may cause explosion, fire, electrical shock or other hazardous conditions which may result in personal injury or property damage.
- Some local codes require licensed installation / service personnel to service this type of equipment. Under no circumstances should the equipment owner attempt to install parts or service this equipment. Failure to comply with this warning could result in property damage, personal injury, or death.

## R6GD Gas Heating / Electric Cooling Package Units 13 SEER, 3 Phase, 460V Models

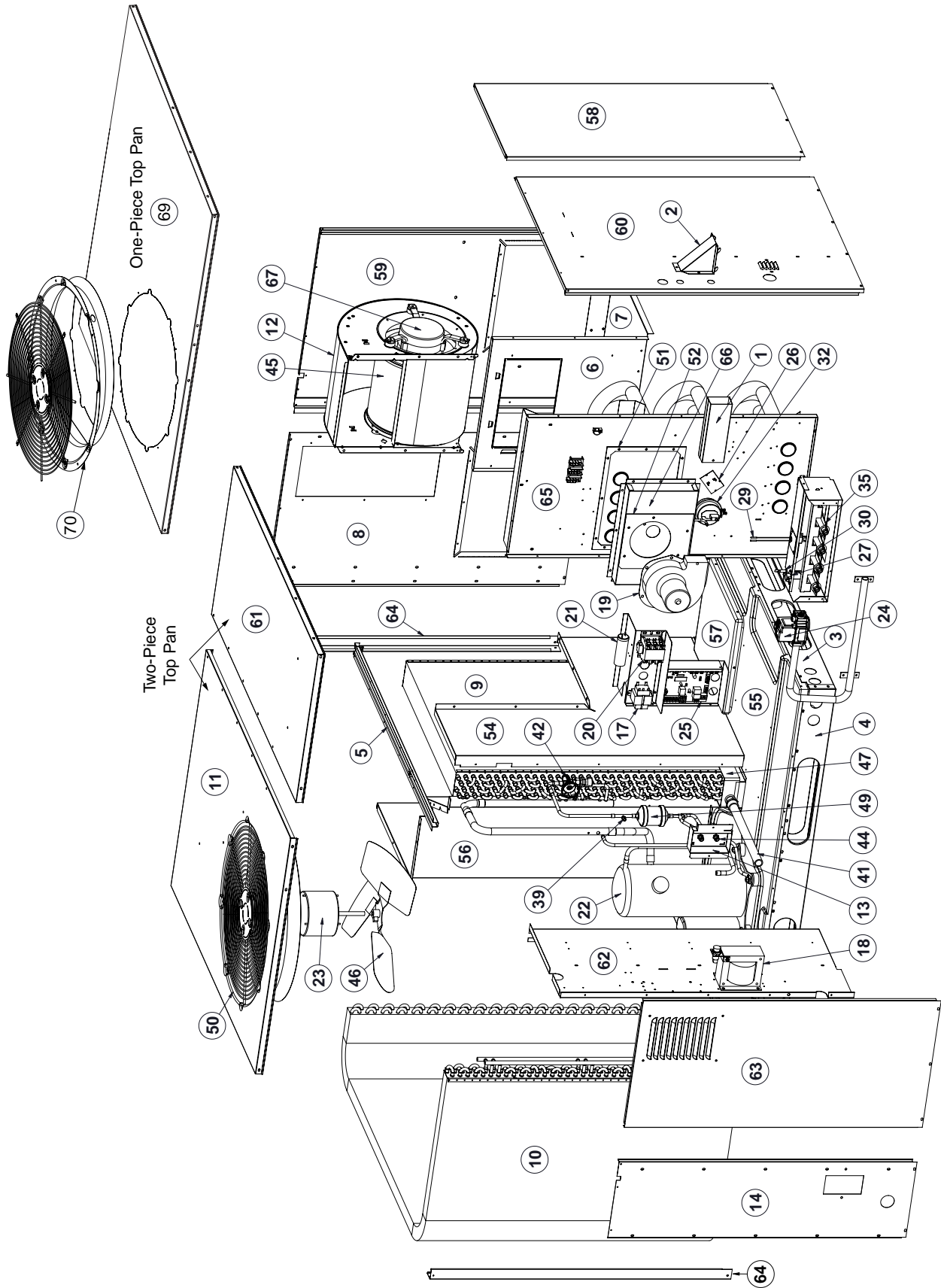
ITEM	DESCRIPTION	R6GD- X36D072C	R6GD- X36D096C	R6GD- X48D096C	R6GD- X48D120C	R6GD- X60D096C	R6GD- X60D120C
		919968	919969	919970	919971	919972	919973
1	EXHAUST DUCT ASSEMBLY	263420R	263420R	263420R	263420R	263420R	263420R
2	VENT COVER ASSEMBLY	265040R	265040R	265040R	265040R	265040R	265040R
3	RAIL, BASE, SHORT	277551	277551	277551	277551	277551	277551
4	RAIL, BASE, LONG	277552	277552	277552	277552	277552	277552
5	CHANNEL, DRAIN	279722R	279722R	279722R	279722R	279722R	279722R
6	PANEL, BLOWER DISCHARGE	281493	281493	281493	281493	281493	281493
7	BLOWER SHELF	283932	283932	283932	283932	283932	283932
8	RETURN PANEL W/ACCESS DOOR	286702R	286702R	286701R	286701R	286701R	286701R
9	COIL INDOOR	D13001R	D13001R	D13011R	D13011R	283621R	283621R
10	COIL,OUTDOOR	287071R	287071R	287091R	287091R	287101R	287101R
11	INSULATED TOP RIGHT PAN ASSY.	292441R	292441R	292441R	292441R	292441R	292441R
12	BLOWER HSG ASSY, 9/10X10	297214	297214	297214	297214	—	—
	BLOWER HSG ASSY, 11X10	—	—	—	—	297219	297219
13	BRACKET, EXT. SERV PT, HI-FLOW	298551R	298551R	298551R	298551R	298551R	298551R
14	PANEL, FRONT	298892R	298892R	298893R	298893R	298893R	298893R
15	NUT, HEX, 8-32, DBL THICK, BLACK (NOT SHOWN)	606261	606261	606261	606261	606261	606261
16	NUTHN, H , 1/2-20X.313, BRASS *G (NOT SHOWN)	618084	618084	618084	618084	618084	618084
17	TRANSFORMER 40 VA	621709	621709	621709	621709	621709	621709
18	AUTOTRANSFORMER, 1200 VA	621759	621759	621759	621759	621759	621759
19	INDUCER MOTOR	903162	903162	903162	903162	903162	903162
20	CONTACTOR, 3-POLE / 30A W/AUX. SW	621832	621832	621832	621832	621832	621832
21	CAPAC,RUN 7.5 / 370-RND-PLST	622132	622132	622132	622132	622132	622132
22	COMP, COPE, ZP31K5E-TFD-130	920137	920137	—	—	—	—
	COMP, COPE, ZP42K5E-TFD-130	—	—	920138	920138	—	—
	COMP, COPE, ZP54K5E-TFD-130	—	—	—	—	920139	920139
23	FAN MOTOR	622422	622422	622422	622422	622422	622422
24	VALVE, GAS	624657	624657	624657	624657	624657	624657
25	CONTROL, INTEGRATED, HIS	919943	919943	919943	919943	919943	919943
26	SWITCH, LIMIT (165 / 145)	—	626432	626432	626432	626432	626432
	SWITCH, LIMIT (200 / 180)	626467	—	—	—	—	—
27	SWITCH, LIMIT (320)	626547	626547	626547	626547	626547	626547
28	FUSE, 3-AMP (NOT SHOWN)	632261	632261	632261	632261	632261	632261
29	IGNITOR	903179	903179	903179	903179	903179	903179
30	SENSOR, FLAME	903600	903600	903600	903600	903600	903600
31	SWITCH, HIGH PRESSURE (NOT SHOWN)	632401	632401	632401	632401	632401	632401
32	SWITCH, PRESSURE, NO. 0.75	632427	632427	632427	632427	632427	632427
33	HTR, CRANKCASE, 480V / 40W, 60" (NOT SHOWN)	632576	632576	632576	632576	632576	632576
34	PLUG, MOLDED, HV, TF5, 52" (NOT SHOWN)	634718	634718	634718	634718	634718	634718
35	BURNER, INSHOT	660812	660812	660812	660812	660812	660812
36	ORIFICE, MAIN BURNER, #43 DRILL (NOT SHOWN)	661043	661043	661043	661043	661043	661043
37	CORE, CHARGING PORT (NOT SHOWN)	662103	662103	662103	662103	662103	662103

Please specify the correct Model No., Serial No, and Part No. when ordering parts from the nearest authorized dealer or service center.

## R6GD Gas Heating / Electric Cooling Package Units 13 SEER, 3 Phase, 460V Models

ITEM	DESCRIPTION	R6GD- X36D072C	R6GD- X36D096C	R6GD- X48D096C	R6GD- X48D120C	R6GD- X60D096C	R6GD- X60D120C
		919968	919969	919970	919971	919972	919973
38	DIST, BODY, 5CIR (NOT SHOWN)	663582	663582	—	—	—	—
	DIST, BODY, 6CIR (NOT SHOWN)	—	—	664410	664410	—	—
	DIST, BODY, 8CIR (NOT SHOWN)	—	—	—	—	663586	663586
39	FITTING, ACCESS	663812	663812	663812	663812	663812	663812
40	CAP, SERVICE PORT, BRASS (NOT SHOWN)	663818	663818	663818	663818	663818	663818
41	DRAIN TUBE ASSY	663833	663833	663833	663833	663833	663833
42	THERMAL EXPANSION VALVE	664349	664349	664350	664350	664275	664275
43	CORE, PORT, HI FLOW, BRASS (NOT SHOWN)	664331	664331	664331	664331	664331	664331
44	FITTING, PANEL MNT, HI-FLOW, 3/8"	664393	664393	664393	664393	664393	664393
45	WHEEL,BLOWER 10 X 10	667207	667207	667207	667207	—	—
	WHEEL, BLOWER 11 X 10	—	—	—	—	667260	667260
46	FAN BLADE	667278	667278	667278	667278	667278	667278
47	PAN, DRAIN	669190	669190	669190	669190	669190	669190
48	REPLACEMENT HAIL GUARD KIT (NOT SHOWN)	917206	917206	917206	917206	917206	917206
49	DRIER, FILTER, UNIFLOW, 8 IN^3	669378	669378	669378	669378	669378	669378
50	GRILLE, TOP-24" BLACK	669404	669404	669404	669404	669404	669404
51	GASKET, COLLECTOR PAN	689506	689506	689506	689506	689506	689506
52	GASKET, INDUCER	689518	689518	689518	689518	689518	689518
53	PAINT, STERLING GRAY, TOUCH UP	903598	903598	903598	903598	903598	903598
54	PANEL, HEAT EX. DIVIDER	D05072R	D05072R	D05073R	D05073R	D05073R	D05073R
55	BOTTOM PAN ASSEMBLY	D05480R	D05480R	D05480R	D05480R	D05480R	D05480R
56	DIVIDER PANEL ASSEMBLY	D05502R	D05502R	D05503R	D05503R	D05503R	D05503R
57	DUCT CAP ASSEMBLY	D05530R	D05530R	D05530R	D05530R	D05530R	D05530R
58	BLOWER PANEL ASSEMBLY	D05542R	D05542R	D05543R	D05543R	D05543R	D05543R
59	SUPPLY PANEL ASSEMBLY	D05552R	D05552R	D05553R	D05553R	D05553R	D05553R
60	CORNER PANEL ASSEMBLY	D05622R	D05622R	D05623R	D05623R	D05623R	D05623R
61	TOP PAN ASSEMBLY. -LEFT	293781R	293781R	293781R	293781R	293781R	293781R
62	PANEL, CLOSE-OFF ASSEMBLY	D05682R	D05682R	D05683R	D05683R	D05683R	D05683R
63	LOUVERED SERVICE PANEL ASSY.	D07242R	D07242R	D07243R	D07243R	D07243R	D07243R
64	POST, CORNER	D09996R	D09996R	D09997R	D09997R	D09997R	D09997R
65	HEAT EXCH. PANEL ASSY, 3, 34"	D10312R	—	—	—	—	—
	HEAT EXCH. PANEL ASSY, 4, 34"	—	D10306R	—	—	—	—
	HEAT EXCH. PANEL ASSY, 4, 38"	—	—	D10308R	—	D10308R	—
	HEAT EXCH. PANEL ASSY, 5, 38"	—	—	—	D10309R	—	D10309R
66	COLLECTOR PAN ASSY, W/O RETAINER	D10322R	D10323R	D10323R	D10324R	D10323R	D10324R
67	MOTOR, FTV PROG, R6, 1/2HP, 460V	919968	919969	—	—	—	—
	MOTOR, FTV PROG, R6, 3/4HP, 460V	—	—	919970	919971	—	—
	MOTOR, FTV PROG, R6, 1HP, 460V	—	—	—	—	919972	919973
68	SET OF WIRES (NOT SHOWN)	M0038354R	M0038354R	M0038354R	M0038354R	M0038354R	M0038354R
69	ONE-PIECE TOP PAN KIT (ORIFICE INCLUDED)	M0034721	M0034721	M0034721	M0034721	M0034721	M0034721
70	DROP-IN ORIFICE	263210	263210	263210	263210	263210	263210

Please specify the correct Model No., Serial No, and Part No. when ordering parts from the nearest authorized dealer or service center.



**NORDYNE**  
COMPLETE COMFORT. GENUINE VALUE.

Specifications & illustrations subject to change without notice or incurring obligations.  
O' Fallon MO | Printed in U.S.A (12/12)



708984B (Replaces 708984A)