

## REPLACEMENT PARTS LIST

### Single Package Air Conditioner P6SD Series 13 SEER, 3-Phase Models



Premium Model Shown

## IMPORTANT

- This document is primarily intended to assist qualified individuals experienced in the proper repair or servicing of this appliance. Only factory authorized parts or accessory kits may be used with this product. Improper installation, service, adjustment, or maintenance may cause explosion, fire, electrical shock or other hazardous conditions which may result in personal injury or property damage.
- Some local codes require licensed installation / service personnel to service this type of equipment. Under no circumstances should the equipment owner attempt to install parts or service this equipment. Failure to comply with this warning could result in property damage, personal injury, or death.

## P6SD Series Single Package Air Conditioner 3-Phase Models

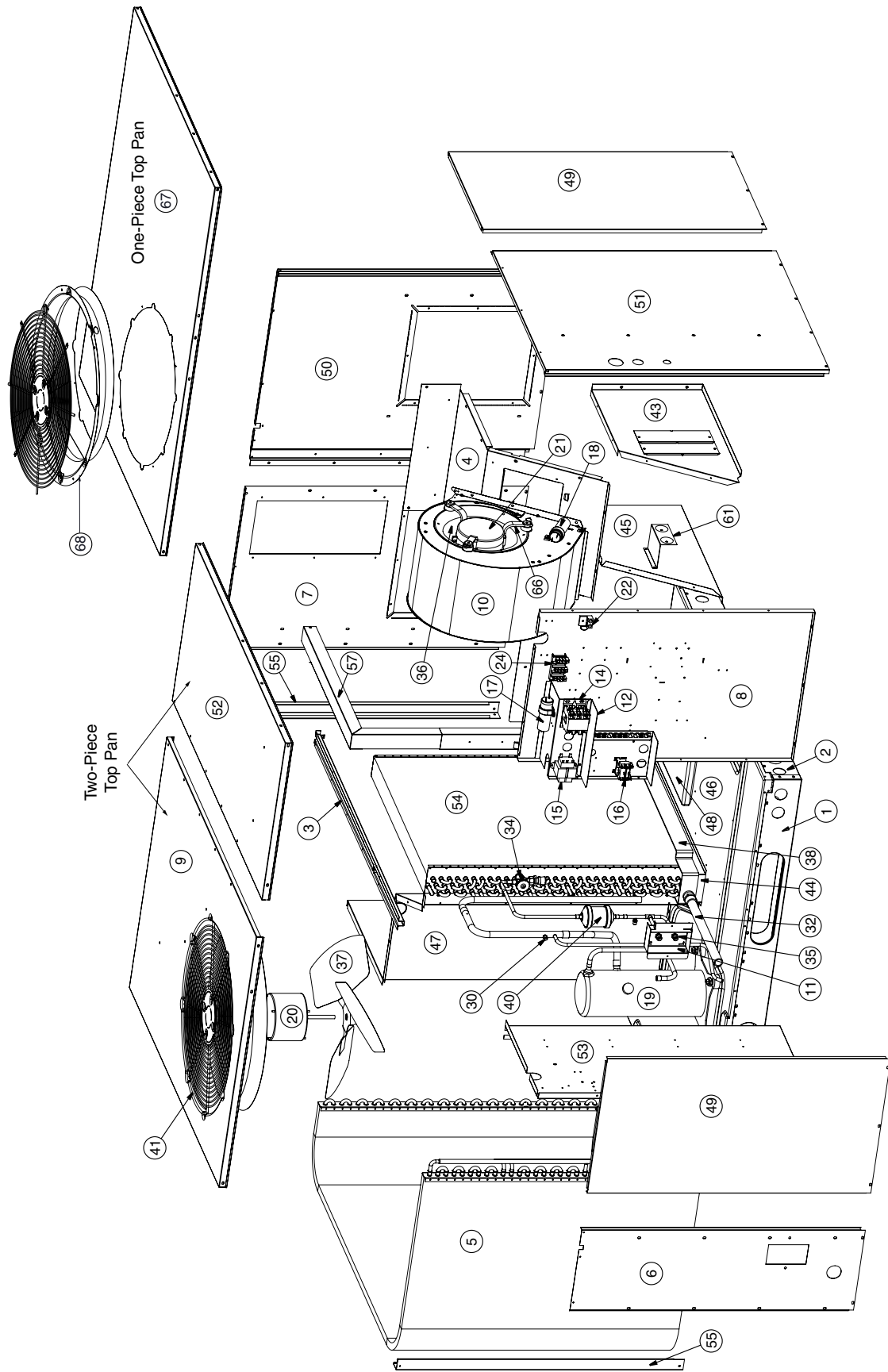
ITEM	DESCRIPTION	P6SD-X36D	P6SD-X48D	P6SD-X60D
		919947	919948	919949
1	RAIL, BASE, 47.23" LG	277551	277551	277551
2	RAIL, BASE, 55.63" LG	277552	277552	277552
3	CHANNEL, DRAIN	279722R	279722R	279722R
4	PANEL, BLOWER TRANSITION	283941	283942	283942
5	COIL, OUTDOOR	285821R	285831R	285841R
6	PANEL, FRONT	298892R	298892R	298893R
7	RETURN PANEL ASSY W/ACCESS DR	286702R	286702R	286701R
8	CONTROL PANEL ASSY	292406R	292406R	292407R
9	INSULATED TOP RIGHT PAN ASSY	292441R	292441R	292441R
10	BLOWER HSG ASSY, 10X8	297212	—	—
	BLOWER HSG ASSY, 10X10	—	297214	297214
11	BRACKET, EXT. SERVICE PORTS	298551R	298551R	298551R
12	DIVIDER, LOW VOLTAGE	2A9691	2A9691	2A9691
13	BRASS NUT, EXT. SERVICE PORT (NOT SHOWN)	618084	618084	618084
14	CONTACTOR, 3 POLE / 30A W/AUX. SW	621832	621832	621832
15	TRANSFORMER 40VA	621850	621850	621850
16	RELAY, DPDT, 24V COIL	624617	624617	—
	RELAY, SPDT, NO / NC, 20/10	—	—	621931
17	CAPAC, RUN 7.5/370-RND-PLST	622132	622132	622132
18	CAPAC, RUN 10/370-RND-PLST	622133	—	—
	CAPAC, RUN 15/370-RND-PLST	—	622135	—
19	COMP, COPE, ZP31K5E-TFD-130	920137	—	—
	COMP, COPE, ZP42K5E-TFD-130	—	920138	—
	COMP, COPE, ZP54K5E-TFD-130	—	—	920139
20	MTR, FAN, PSC, K, 1/4	622422	622422	622422
21	BLOWER MOTOR 3/4HP	—	—	M0023924R
	BLOWER MOTOR 1/4HP	622423	—	—
	BLOWER MOTOR 1/2HP	—	622424	—
22	DUAL GROUNDING LUG	632235	632235	632235
23	FUSE, 3-AMP (NOT SHOWN)	632261	632261	632261
24	BLOCK, TERMINAL, 3-POLE	632348	632348	632348
25	SWITCH, HIGH PRESSURE (NOT SHOWN)	632401	632401	632401
26	HEATER, CRANKCASE, 480V / 40W, 60" (NOT SHOWN)	632576	632576	632576
27	PLUG, MOLDED, HV, TF5, 52" (NOT SHOWN)	634718	634718	634718
28	CORE, CHARGING PORT (NOT SHOWN)	662103	662103	662103
29	DIST, BODY, 5 CIR (NOT SHOWN)	663582	663582	—
	DIST, BODY, 8 CIR (NOT SHOWN)	—	—	663586
30	FITTING, ACCESS	663812	663812	663812
31	CAP, SERVICE PORT, BRASS (NOT SHOWN)	663818	663818	663818

Please specify Model No., Serial No, and the correct part number(s) when ordering parts from the nearest authorized dealer or service center.

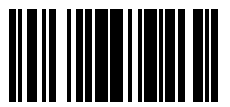
## P6SD Series Single Package Air Conditioner 3-Phase Models (Continued)

ITEM	DESCRIPTION	P6SD-X36D	P6SD-X48D	P6SD-X60D
		919947	919948	919949
32	DRAIN TUBE ASSY	663833	663833	663833
33	CORE, PORT, HI FLOW, BRASS (NOT SHOWN)	664331	664331	664331
34	THERMAL EXPANSION VALVE	664349	664350	664275
35	FITTING, PANEL MNT, HI-FLOW, 3/8"	664393	664393	664393
36	WHEEL, BLOWER CW 10 X 8	667037	—	—
	WHEEL, BLOWER 10 X 10	—	667207	667207
37	FAN, 3BL, 20.0D, 30P, CW, 1/2, 1140	—	667278	667278
	FAN, 3BL, 20.0D, 26P, CW, 1/2, 1140	667279	—	—
38	PAN, DRAIN R4/P4/Q4	669190	669190	669190
39	REPLACEMENT HAIL GUARD KIT (NOT SHOWN)	917206	—	917206
40	DRIER, FILTER, UNIFLOW, 8 IN^3	669378	669378	669378
41	GRILLE, TOP-24" BLACK	669404	669404	669404
42	PAINT, STERLING GRAY, TOUCH UP	903598	903598	903598
43	PANEL, ELECTRIC HEAT	D05420	D05420	D05420
44	STAND, DRAIN PAN	D05440	D05440	D05440
45	PANEL, BLOWER TRANS SIDE	D05450	D05450	D05450
46	BOTTOM PAN ASSY.	D05480R	D05480R	D05480R
47	DIVIDER PANEL ASSY.	D05502R	D05502R	D05503R
48	DUCT CAP ASSY.	D05530R	D05530R	D05530R
49	SERVICE PANEL ASSY.	D05542R	D05542R	D05543R
50	SUPPLY PANEL ASSY.	D05555R	D05555R	D05556R
51	CORNER PANEL ASSY.	D05625R	D05625R	D05626R
52	TOP PAN ASSY. -LEFT	293781R	293781R	293781R
53	PANEL, CLOSE-OFF ASSY.	D05685R	D05685R	D05686R
54	COIL, INDOOR	D13001R	D13001R	D06256R
55	POST, CORNER	D09996R	D09996R	D09997R
56	SET OF WIRES (NOT SHOWN)	M0038368R	M0038368R	M0038369R
57	FILTER RACK ASSEMBLY	M0021601	M0021601	M0021601
58	LOW PRESSURE SWITCH (NOT SHOWN)	632393	632393	632393
59	COIL SUPPORT (NOT SHOWN)	263394	263394	—
60	COIL SUPPORT (NOT SHOWN)	—	—	263395
61	BRACKET, ELECTRIC HEAT	263860	263860	263860
62	DUCT COVER (NOT SHOWN)	284821	284821	284821
63	BRACKET, BLOWER HOUSING (NOT SHOWN)	295771	295771	295771
64	BRACKET, HAIL GUARD, LT (NOW SHOWN)	2A6811	2A6811	2A6811
65	BRACKET, HAIL GUARD, RT (NOT SHOWN)	2A6821	2A6821	2A6821
66	MOTOR MOUNTING ARM	—	668928	668928
67	ONE-PIECE TOP PAN KIT (ORIFICE INCLUDED)	M0034721	M0034721	M0034721
68	DROP-IN ORIFICE	263210	263210	263210

Please specify Model No., Serial No, and the correct part number(s) when ordering parts from the nearest authorized dealer or service center.



**NORDYNE**  
 COMPLETE COMFORT. GENUINE VALUE.



Specifications & illustrations subject to change without notice or incurring obligations.  
 O' Fallon MO | Printed in U.S.A (04/11)

708988A (Replaces 7089880)