

WIRING DIAGRAM

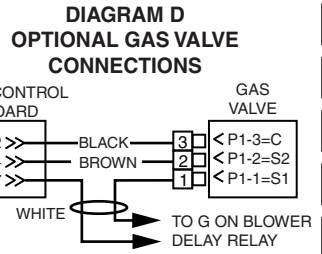
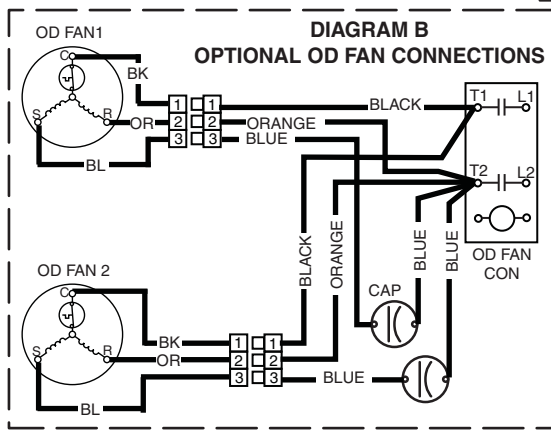
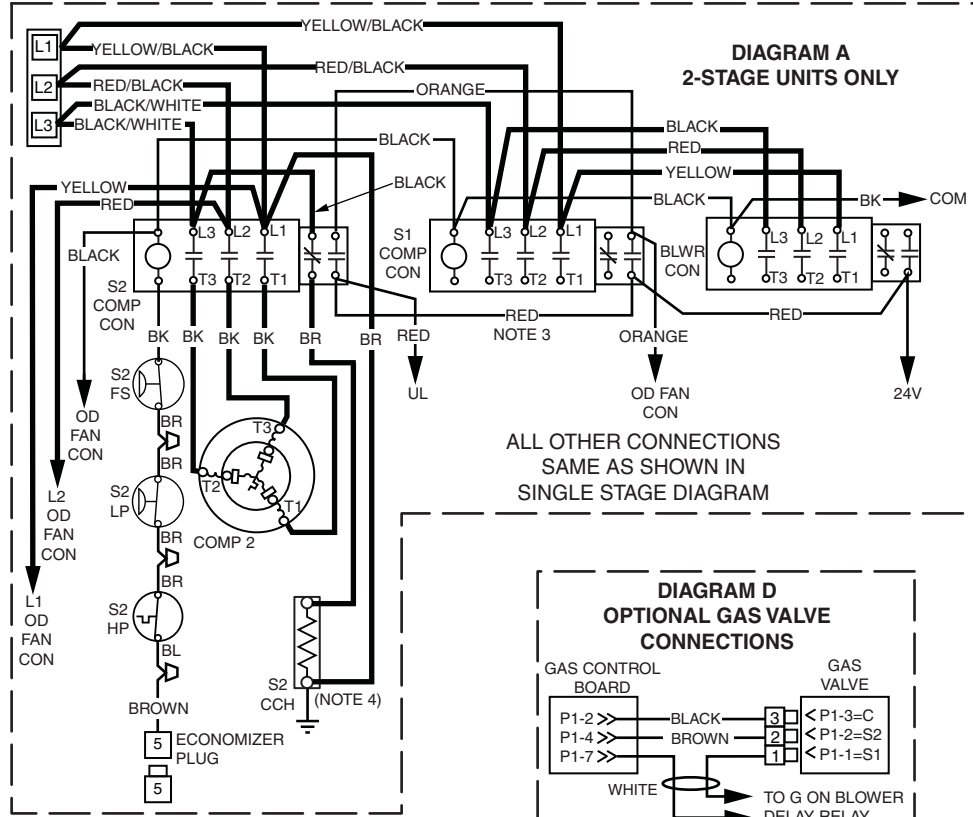
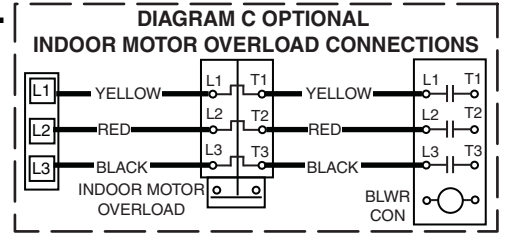
R6GP-(072/090/120) (C/D) Series

NOTES:

1. This wire replaced when autotransformer is used.
2. For 072C models only. For 208V operation, remove wire from 240V tap on transformer and install on 208V tap.
3. Wires attached to normally open contacts.
4. Wires attached to normally closed contacts.
5. Disconnect all power before servicing.

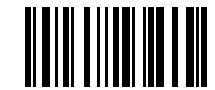
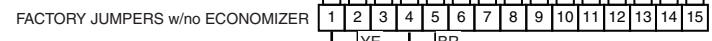
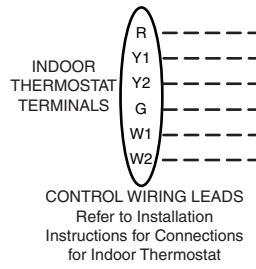
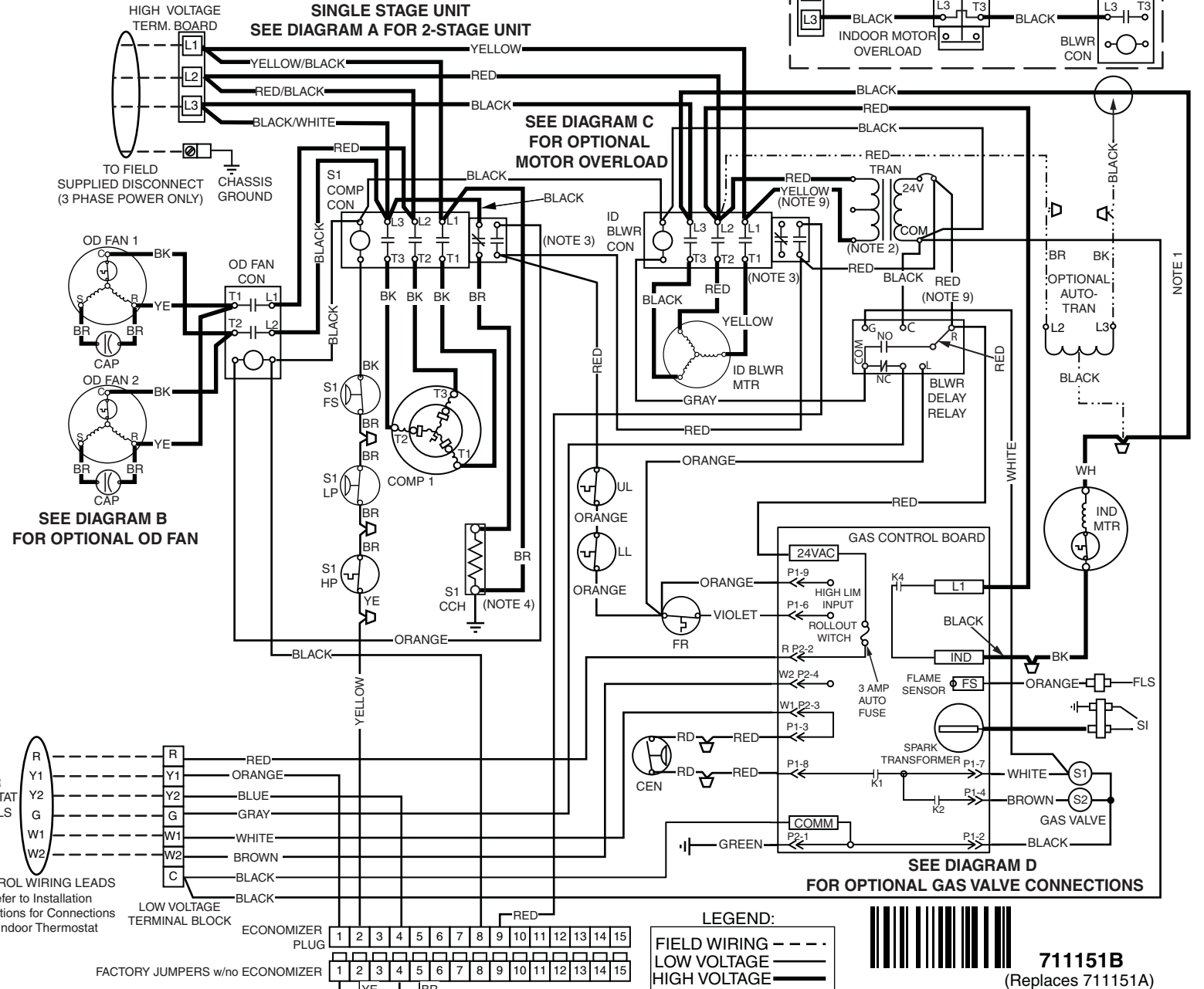
208-230/460 VOLT

Three Phase / 60Hz.



- BLWR = BLOWER
- CAP = CAPACITOR
- CCH = CRANKCASE HEATER
- CEN = CENTRIFUGAL SWITCH
- COMP = COMPRESSOR
- CON = CONTACTOR
- FLS = FLAME SENSOR
- FR = FLAME ROLLOUT SWITCH
- FS = FREEZESTAT
- HP = HIGH PRESSURE SWITCH
- ID = INDOOR
- IND = EXHAUST INDUCER
- LL = LOWER LIMIT (AIR)
- LP = LOW PRESSURE SWITCH
- MTR = MOTOR
- OD = OD
- S1 = STAGE 1
- S2 = STAGE 2
- SI = SPARK IGNITOR
- TRAN = TRANSFORMER
- UL = UPPER LIMIT (AIR)

6. For supply connections, use copper conductors only.
7. If any of the original wire as supplied with the unit must be replaced, it must be replaced with wiring material having a temperature rating of at least 105C.
8. For supply wire ampacities and overcurrent protection, see unit rating label.
9. These wires replaced when ID motor overload present.



711151B
(Replaces 711151A)
07/12