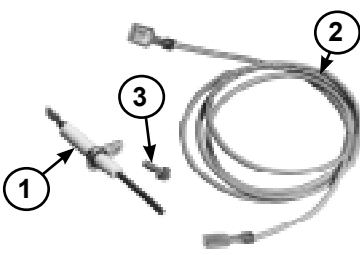


Replacement Flame Sensor Package P/N 135435

Applies: Models ADF / ADFH

Description / Application

The flame sensor rod in this package is a functional replacement for the flame sensor rod originally installed on Model ADF/ADFH systems manufactured prior to 11/94. Some field modifications are required to install the replacement flame sensor. Follow the instructions below.

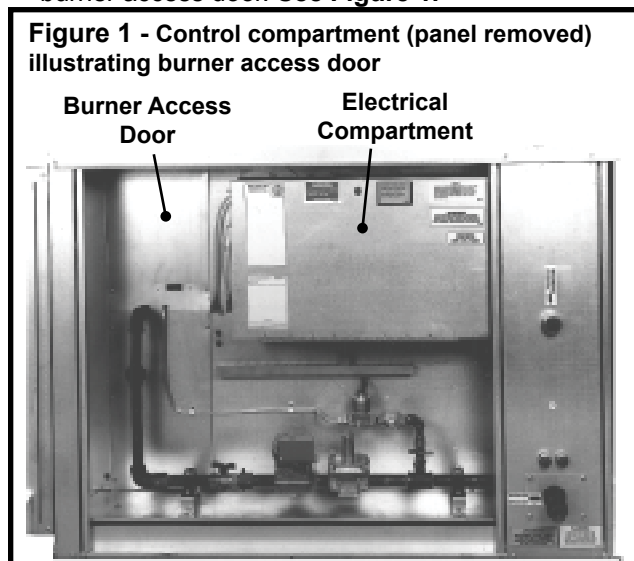
Components of Package P/N 135435			
			
Code	Qty	P/N	Description
1	1	134706	Flame Rod Sensor Johnson Controls #Y75MK-ID
2	1	135438	Red Wire Assembly 18gauge x 44"long - 150°C
3	1	38529	Screw #8 x 1/2"long

Tools Required: 11/32" open end wrench, 5/32" dia. drill bit, flat blade screwdriver & 1/4" nut driver

Installation Instructions

WARNING: Improper installation, adjustment, alteration, service or maintenance can cause property damage, injury or death. Read the installation instructions thoroughly before installing this equipment.

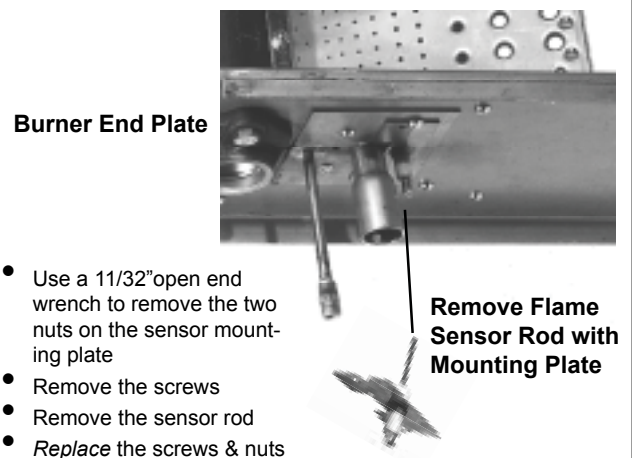
1. Turn off the gas supply and the electrical power.
2. Remove the control compartment door panel and the burner access door. See **Figure 1**.



DANGER: Service work on this system should only be done by a qualified gas service person. Installation must be done in accordance with these instructions and in compliance with all codes and requirements of authorities having jurisdiction. Failure to follow instructions could result in death, serious injury and/or property damage. The qualified agency performing the work assumes responsibility for this installation

3. Disconnect the flame sensor lead at the burner.
4. Remove the two nuts and screws that hold the flame sensor mounting plate to the burner. See **Figure 2**. Remove the flame sensor rod. Re-insert the screws to fill the holes in the pilot mounting plate and the burner end plate; replace the nuts.

Figure 2 - Remove the original flame sensor rod from the burner



5. The replacement sensor rod has a much smaller mounting plate than the sensor removed. Insert the sensor rod into the hole. Mark the mounting hole. Remove the sensor and drill a 5/32" dia. hole through the pilot mounting plate and the burner end plate. Position the new sensor rod and attach with the screw provided.
6. Connect the new sensor wire assembly to the sensor rod. Open the electrical box and disconnect the flame sensor wire from the ignition control module (Terminal FS). Remove the wire. Follow the same path with the new wire and connect it to the ignition control module. Pull any excess wire into the electrical box.
7. Replace all panels. Turn on the electric and gas. Check the operation of the system including all safety features.

Specifications & illustrations subject to change without notice and without incurring obligations.

© Nortek Global HVAC, LLC 2016. All rights reserved.

All marks are the property of their respective organizations.

O'Fallon, MO I Printed in U.S.A. (1/16)

Form CP-ADF-SNSR (1-16), PN 135436 R1