

WARNING: All components of the gas supply system must be leak tested prior to placing equipment into service. Never test for leaks with an open flame. Failure to comply could result in severe personal injury or death. Use an approved leak-test solution or soap solution to detect leaks.

Installation Instructions for Carryover Lighter Tube - Natural or Propane Connection

**Parts/Installation Form RZ-NA-P-X/XE-LTR-TUBE
Obsoletes RGM 704 (Version A)**


REZNOR®

APPLIES TO: Model Series X, RX, XE, RXE, REB

Description/Application

These carryover kits are intended for installation on Model (H) (C) RX; (H) (C) X; (H) (C) RXE; (H) (C) REB, and (H) (C) XE that did not include factory-installed lighter tube carryovers (units manufactured prior to 11/86).

Parts List (Lighter Tube Carryover Kits are listed by Size of Heater)

	Size	75/100	125	150/175	200/225	250/300	350	400
 <p>Drip Shield Lighter Tube</p>	For NATURAL GAS Furnace - Kit P/N	92135	92136	92137	92138	92139	92140	92141
	<i>Components:</i>							
	Lighter Tube Assembly Length (inches)	9899 12-3/8	9859 15-1/8	9821 20-5/8	9783 26-1/8	9747 34-3/8	9711 39-7/8	9520 45-3/8
	Drip Shield	15015	15014	15013	15012	15011	15010	14957
	Carryover Orifice Drill Size	9870 70	9870 70	9680 65	10370 59	10370 59	9792 54	9792 54
	Aluminum Tube	93389	93389	93389	93389	93389	93389	93389
	Brass Elbow	93388	93388	93388	93388	93388	93388	93388
	Compression Fitting	9664	9664	9664	9664	9664	9664	9664
	1/2" lg, #10 Sheetmetal Screw Quantity	11813 6	11813 6	11813 6	11813 6	11813 6	11813 6	11813 6
	For PROPANE GAS Furnace - Kit P/N	92142	92143	92144	92145	92146	92147	92148
<i>Components:</i>								
Regulated Carryover Assembly	100712	100712	100712	100712	100712	100712	100712	
Lighter Tube Assembly Length (inches)	9899 12-3/8	9859 15-1/8	9821 20-5/8	9783 26-1/8	9747 34-3/8	9711 39-7/8	9520 45-3/8	
Drip Shield	15015	15014	15013	15012	15011	15010	14957	
Carryover Orifice Drill Size	9870 70	9870 70	9680 65	9680 65	10370 59	9791 56	9791 56	
1/2" lg, #10 Sheetmetal Screw Quantity	11813 6	11813 6	11813 6	11813 6	11813 6	11813 6	11813 6	



Installation Instructions

CAUTION: Hold burner rack firmly and pull slowly.

1. Turn off the gas supply upstream of the valve and turn off the electric.
2. Mark the wires connected to the gas valve and disconnect.
3. Disconnect spark lead and flame sensor from the ignition controller.
4. Remove the burner rack.
 - a) Remove the heater side panel.
 - b) Uncouple the union in the gas supply to permit removal of the burner rack.
 - c) Remove the sheetmetal screws in the top corners of the burner rack and pull the burner rack out of the unit.
5. Follow the illustrated instructions on pages 1-4 to install the Lighter Tube Carryover Kit. Test for leaks. When the installation is complete, reverse Installation Instruction Nos. 1-4 to re-assemble the heater. **Test for proper and safe operation.**

INSTALL LIGHTER TUBE - Steps 1-6 apply both natural gas and propane gas heaters.

1. Burner rack without lighter tube.



2. Back off screws that attach the manifold to the burner rack. Remove top screws.



INSTALL LIGHTER TUBE (cont'd) - Steps 1-6 apply both natural and propane gas heaters.

3. Slide lighter tube into the holes provided. Ensure pin holes in the tube are facing outward toward the burner tubes.



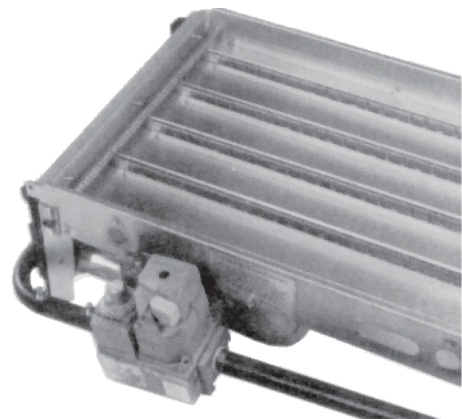
4. Using two screws, secure the lighter tube to the burner rack.



5. Install drip shield. NOTE: "Z" effect when observed from the side. Compress lighter tube into half circle cutouts in the burner tubes. Be sure the tube is seated. The 90° angle on the drip shield should be against the top and side of the burner rear plate.

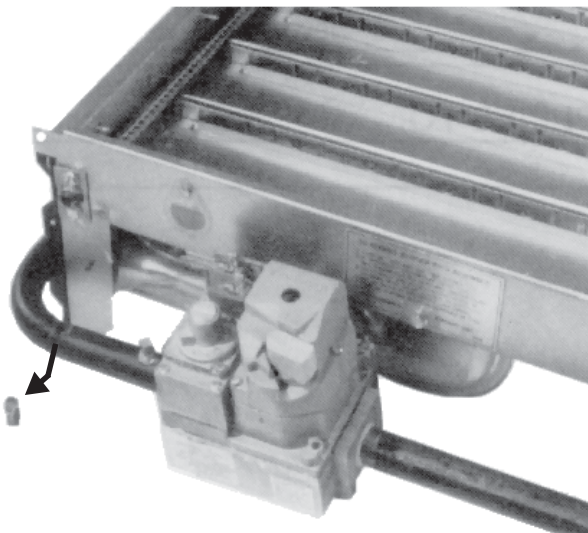


6. Install the drip shield screws to secure the drip shield. Reverse Step No. 2 on page 1.

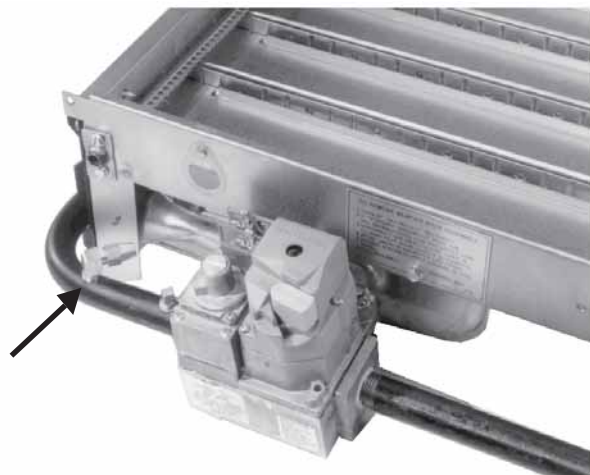


INSTALL LIGHTER TUBE GAS CONNECTIONS - Steps 7-11 apply to Natural Gas Units ONLY

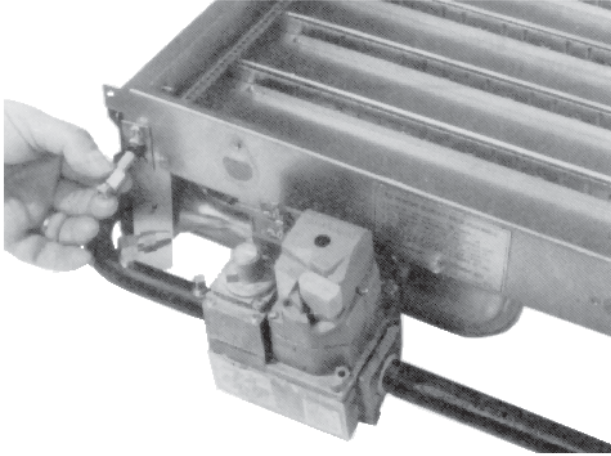
7. Remove the pipe plug from the manifold.



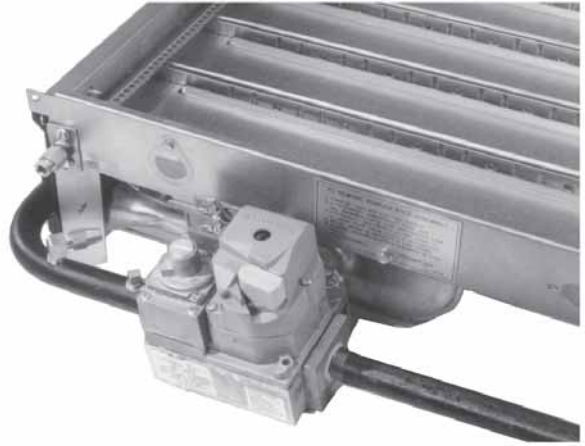
8. Install the 90° elbow and position as illustrated.



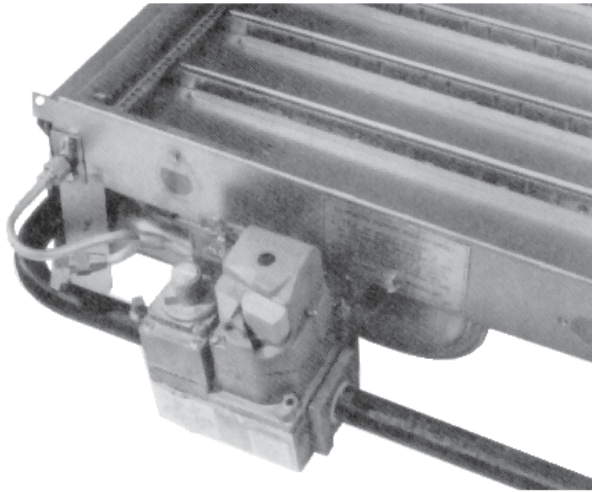
9. Install correct carryover orifice and brass compression fitting. See Step 10.



10. Insert the carryover orifice into the lighter tube. If fit is tight, lightly tap the orifice into position.



11. Install tubing and tighten. Leak test prior to placing unit into operation.

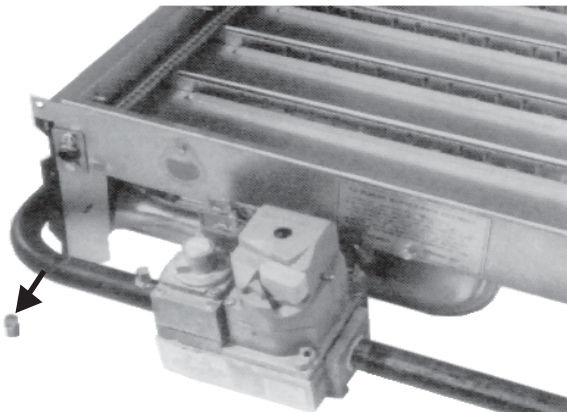


WARNING: All components of gas supply system must be leak tested prior to placing equipment into service.

Never test for leaks with an open flame. Failure to comply could result in severe personal injury or death. Use an approved leak-test solution or soap solution to detect leaks.

INSTALL LIGHTER TUBE GAS CONNECTIONS - Steps 12-19 apply to Propane Gas Units ONLY

12. Remove the pipe plug from the manifold.
If the unit has a lighter tube with natural gas and is being converted to propane gas, remove the 90° elbow, the tubing, and the lighter tube orifice.



13. Install the straight brass fitting in the manifold.



INSTALL LIGHTER TUBE GAS CONNECTIONS (cont'd) - Steps 12-19 apply to Propane Gas Units ONLY

14. Install 1/4" tubing into straight brass fitting and tighten.



15. Place tag on tubing.



16. Install the regulator with the 90° elbows already installed and position as shown. Be sure gas flow is in the direction of the arrow on the regulator. Slide the nut and ferrule on the 90° elbow over the tubing and tighten in place. Verify that the gas flow is in the direction of the arrow on the regulator and that the regulator gas pressure is set for 1.0" w.c. on propane gas.



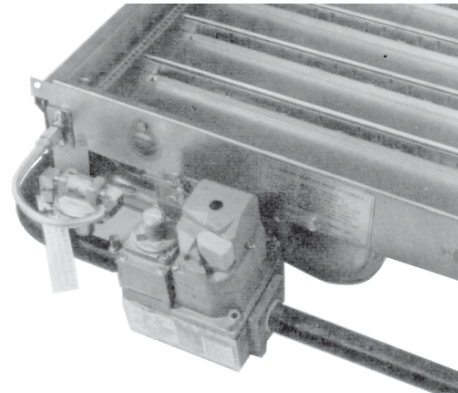
17. Install correct carryover orifice and brass compression fitting. See Step 18.



18. If fit is tight, lightly tap orifice into position.



19. Install tubing between orifice and regulator. Leak test all fittings prior to placing into operation.



WARNING: All components of gas supply system must be leak tested prior to placing equipment into service. Never test for leaks with an open flame. Failure to comply could result in severe personal injury or death. Use an approved leak-test solution or soap solution to detect leaks.

REZNOR®

800-695-1901

www.RezSpec.com

©2044 Tg|pqt."NNE0 All rights reserved.

Printed in U.S.A.

MANUFACTURER OF GAS, OIL, ELECTRIC HEATING AND VENTILATING SYSTEMS

Trademark Note: Reznor® is registered in the United States and other countries.

0734 OG POD

Form P-X/XE-LTR-TUBE™*Xgtukqp'208+